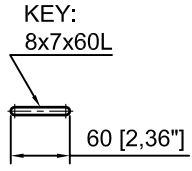
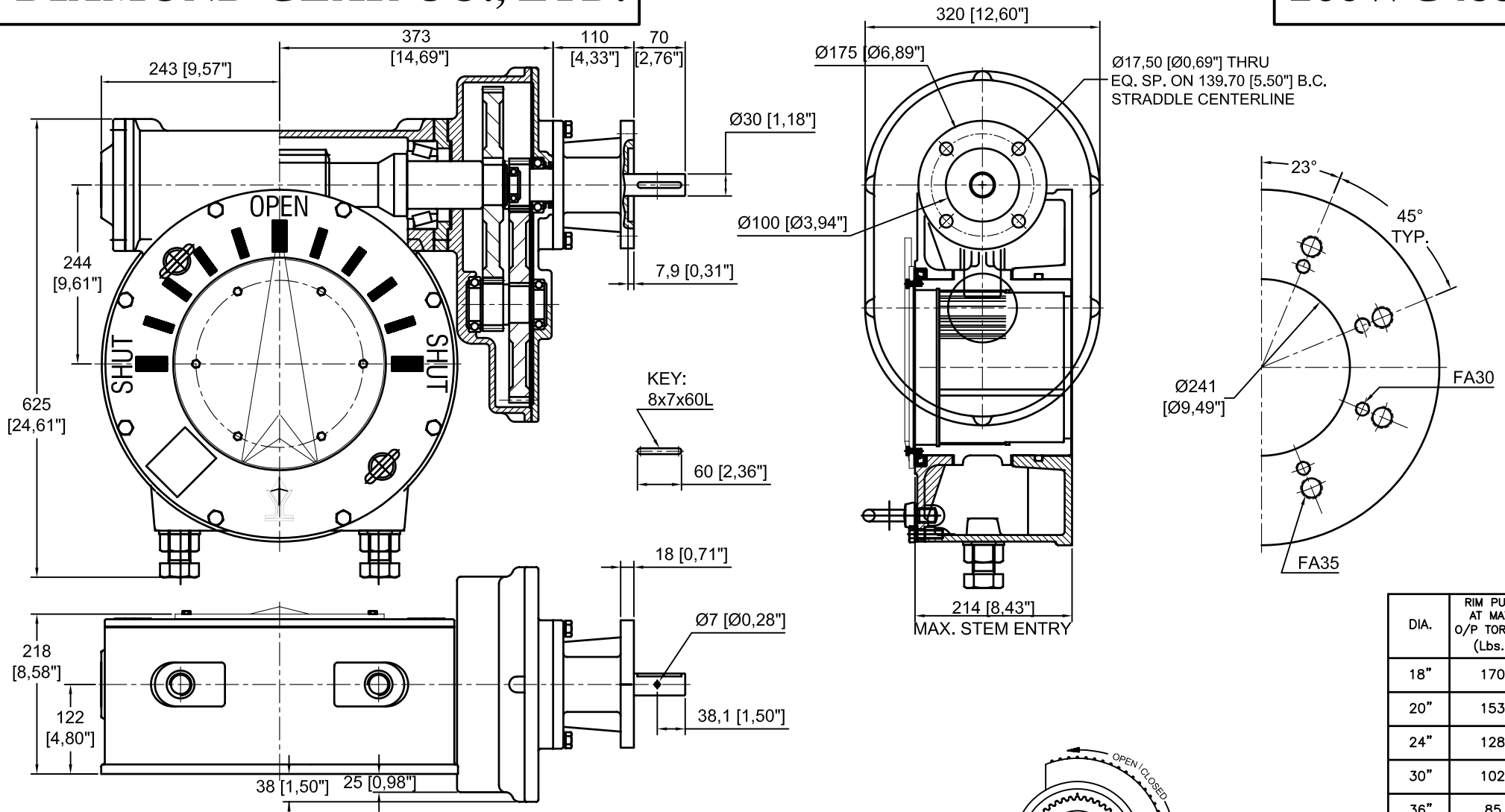


DIAMOND GEAR CO., LTD.

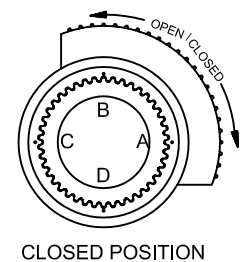
266WG488



DIA.	RIM PULL AT MAX. O/P TORQUE (Lbs.)
18"	170
20"	153
24"	128
30"	102
36"	85

MAX. OUTPUT TORQUE [IN.LB]	MAX. INPUT TORQUE [IN.LB]	RATIO	MECHANICAL ADVANTAGE	OUTPUT ANGULAR STROKE	TURN PER 90°	WEIGHT [LB]
266,327	1528	488:1	174.2	±20°	122	528

MAX. ROUND BORE [IN]	MAX. SQUARE BORE [IN]	MAX. MOUNTING STRADDLE C/L [IN]	MIN. MOUNTING STRADDLE C/L [IN]	MAX. MOUNTING ON C/L [IN]	MIN. MOUNTING ON C/L [IN]	PREFERRED MOUNTING STRADDLE C/L [IN]
6.25	4.4375	17.50	10.50	N/A	N/A	FA30, FA35



REV.A
C921100A 03/09/07

DIAMOND GEAR CO. LTD.
 HOUSTON, TEXAS, USA
 PHONE: 713-590-0270, FAX: 713-590-0278