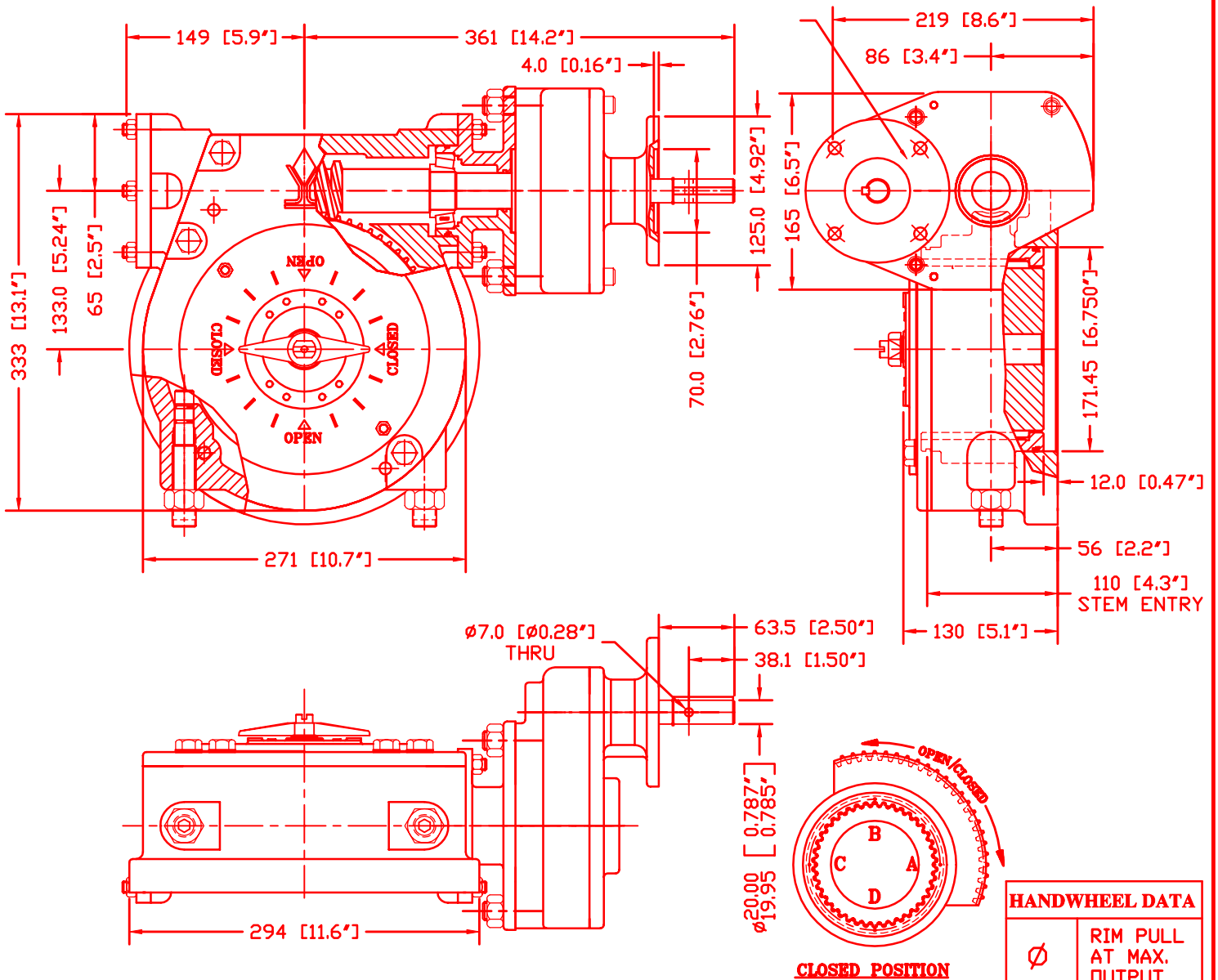


# DIAMOND GEAR CO., LTD.

# 63WG296-02



MAX. OUTPUT TORQUE [IN.LB]	MAX. INPUT TORQUE [IN.LB]	RATIO	MECHANICAL ADVANTAGE	OUTPUT ANGULAR STROKE	TURN PER 90°	WEIGHT [LB]	PREFERRED ACTUATOR MOUNTING STRADDLE C/L [IN]
63,000	945	296:1	66.6	±5°	74	139	FA10

MAX. ROUND BORE [IN]	MAX. SQUARE BORE [IN]	MAX. MOUNTING STRADDLE C/L [IN]	MIN. MOUNTING STRADDLE C/L [IN]	MAX. MOUNTING ON C/L [IN]	MIN. MOUNTING ON C/L [IN]	PREFERRED VALVE MOUNTING STRADDLE C/L [IN]
Ø4.0 KEY: 3/4x1	2.812	Ø10.25	Ø7.75	Ø7.75	Ø7.75	FA25

Ø	RIM PULL AT MAX. OUTPUT TORQUE
12"	158 LBS
14"	135 LBS
16"	118 LBS
18"	105 LBS
20"	95 LBS
24"	79 LBS
30"	63 LBS
36"	53 LBS



**DIAMOND GEAR CO. LTD.**  
HOUSTON, TEXAS, USA

PHONE: 713-590-0270, FAX: 713-590-0278



C400096A

REV.0

01/30/04