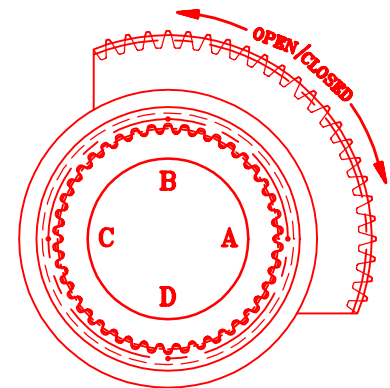
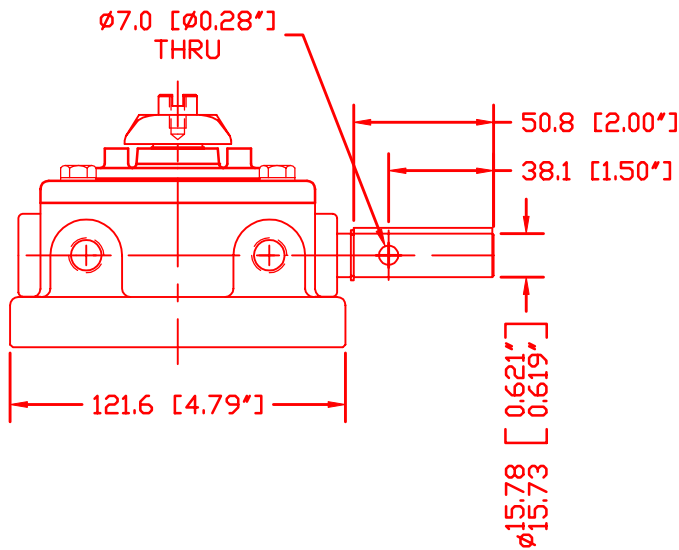
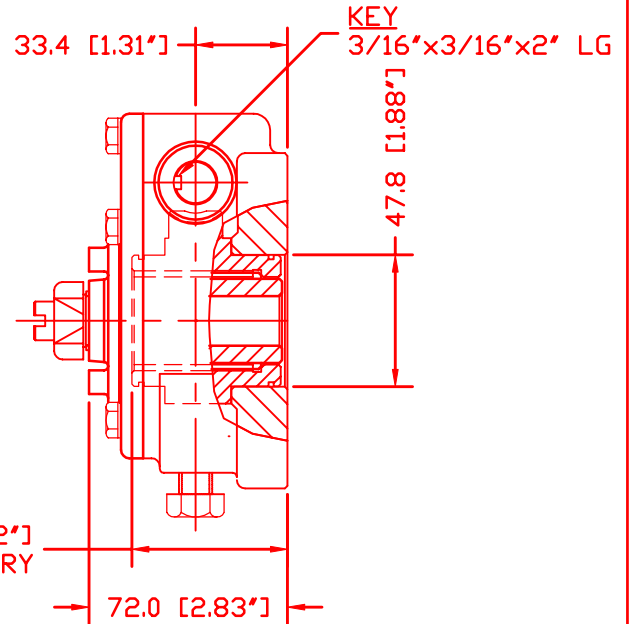
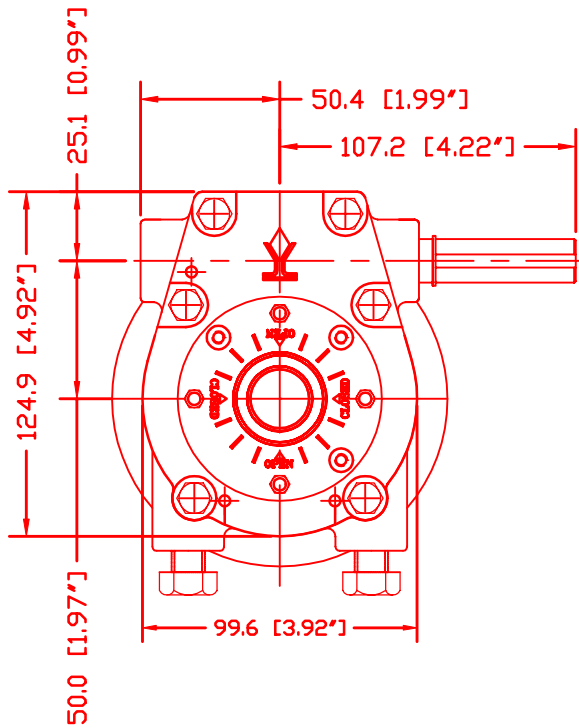


# DIAMOND GEAR CO., LTD.

# 2.5WG50



**CLOSED POSITION**

MAX. OUTPUT TORQUE [IN.LB]	MAX. INPUT TORQUE [IN.LB]	RATIO	MECHANICAL ADVANTAGE	OUTPUT ANGULAR STROKE	TURN PER 90°	WEIGHT [LB]
2,500	190	50:1	13	±5°	12.5	

### HANDWHEEL DATA

Ø	RIM PULL AT MAX. OUTPUT TORQUE
6"	63 LBS
8"	48 LBS
10"	38 LBS
12"	32 LBS
14"	27 LBS
16"	24 LBS

MAX. ROUND BORE [IN]	MAX. SQUARE BORE [IN]	MAX. MOUNTING STRADDLE C/L [IN]	MIN. MOUNTING STRADDLE C/L [IN]	MAX. MOUNTING ON C/L [IN]	MIN. MOUNTING ON C/L [IN]	PREFERRED MOUNTING STRADDLE C/L [IN]
Ø.875 KEY:3/16"x1/8	.750	Ø4.00	Ø2.75	Ø4.00	Ø2.75	FA07 & FA10



**DIAMOND GEAR CO. LTD.**  
HOUSTON, TEXAS, USA

PHONE: 713-590-0270, FAX: 713-590-0278



C400066A

REV.A

04-01-01