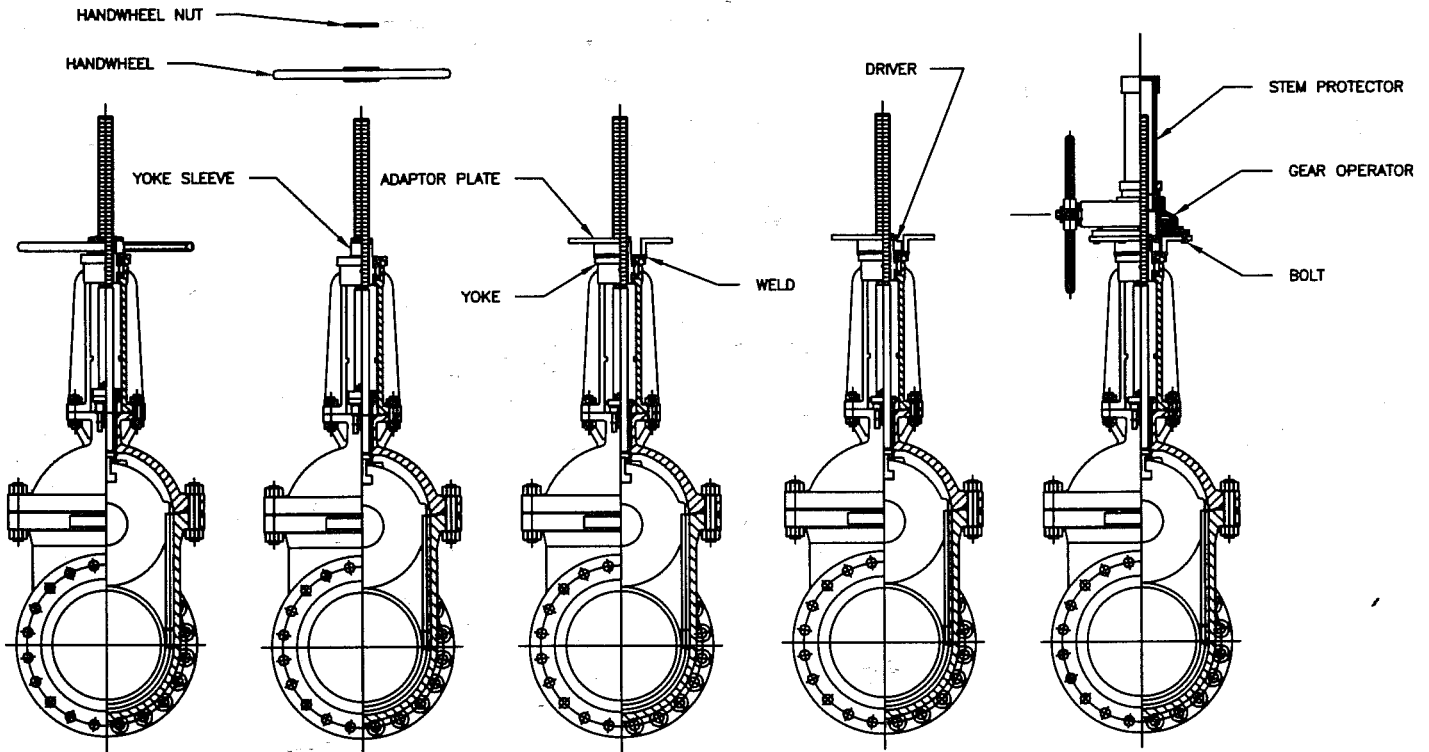


Diamond Gear ®



**STEP 1:** Support the valve in the upright position.

**STEP 2:** Remove the handwheel nut (and set screw if provided).

**STEP 3:** Remove the handwheel from the yoke sleeve.

**STEP 4:** Set the adaptor plate on the top of the yoke of the valve. Align the bolt holes in the adaptor plate with respect to the valve bore. Center the adaptor plate around the stem. Tack weld the adaptor plate to the yoke of the valve. Check the alignment, then complete with a full circumferential weld.

**STEP 5:** Set the driver on the yoke sleeve where the handwheel was located.

**STEP 6:** Set the gear operator on the top of the adaptor plate. Rotate the gear operator to engage the driver and align the output shaft and the mounting holes.

**STEP 7:** Install and tighten the bolts.

**STEP 8:** Install the stem protector by screwing it into the top of the gear operator.