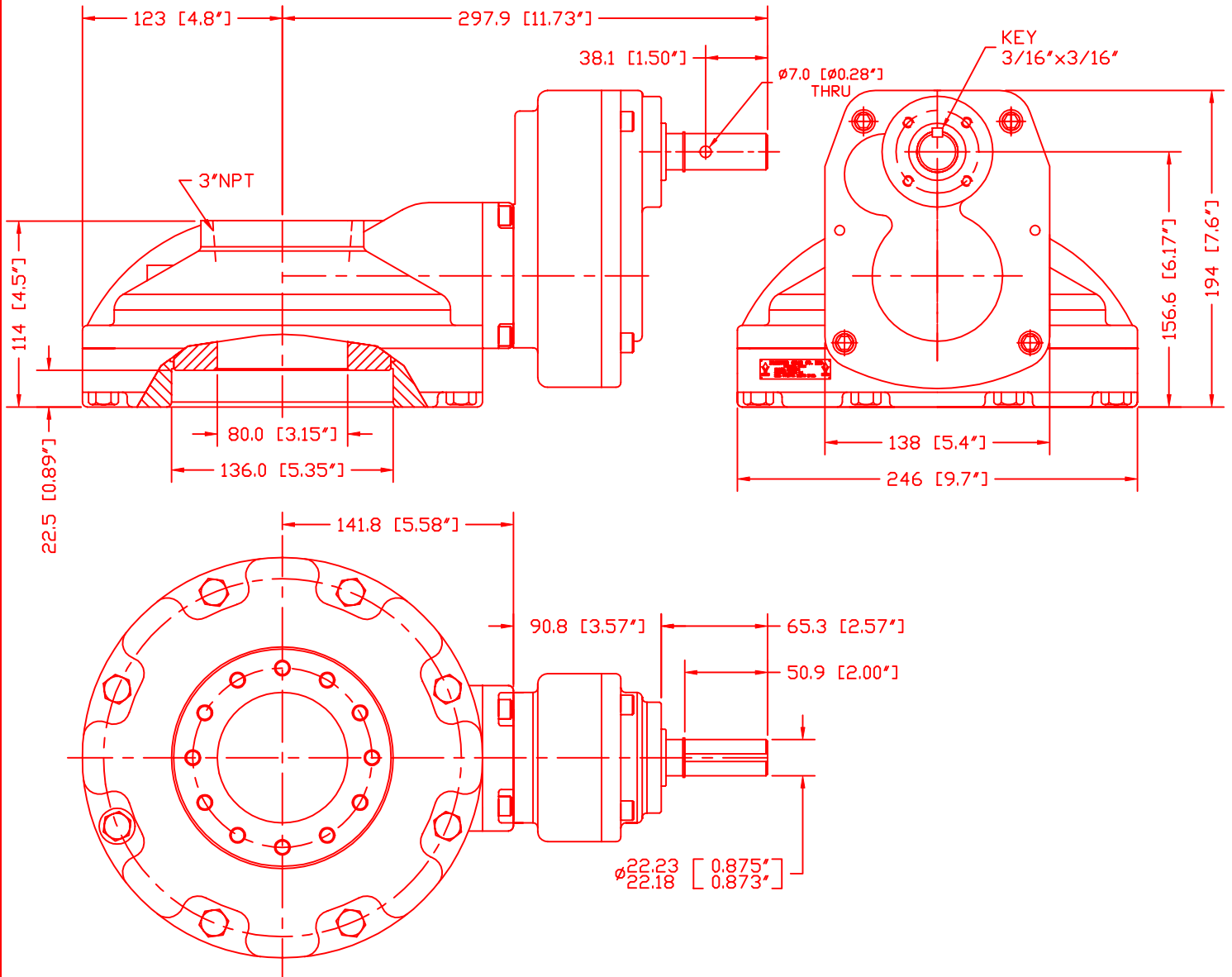


DIAMOND GEAR CO., LTD.

12BG11.25



MAX. OUTPUT TORQUE [FT.LB]	MAX. INPUT TORQUE [FT.LB]	RATIO	MECHANICAL ADVANTAGE	THRUST [LB]	WEIGHT [LB]	DRIVE PATTERN [IN]	INPUT SHAFT PATTERN [IN]
1,250	137	11.25:1	9.12	60,000	59	12x3/8-16UNC ON $\phi 3.937$ B.C	F07

MAX. STEM DIAMETER FOR TORQUE APPLICATION [IN]	MAX. STEM DIAMETER FOR THRUST APPLICATION [IN]	MAX. MOUNTING STRADDLE C/L ON CENTERLINE [IN]	MIN. MOUNTING STRADDLE C/L ON CENTERLINE [IN]	PREFERRED MOUNTING STRADDLE C/L [IN]	PREFERRED MOUNTING ON CENTERLINE [IN]
$\phi 3.00$	$\phi 2.50$	$\phi 8.50$	$\phi 6.5$	FA16 (STANDARD) FA19 (OPTIONAL)	4x1/2-13UNC $\phi 7.63$ B.C (STANDARD)



DIAMOND GEAR CO. LTD.
HOUSTON, TEXAS, USA

PHONE: 713-590-0270, FAX: 713-590-0278



C400004A

(D2000)

REV.C

01-14-01