

# AIR TORQUE

**AIR TORQUE S.p.A.**

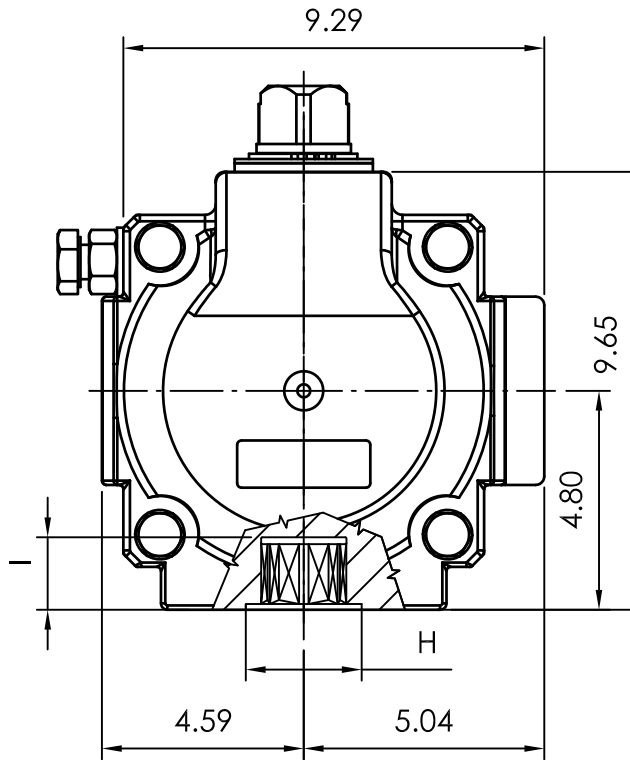
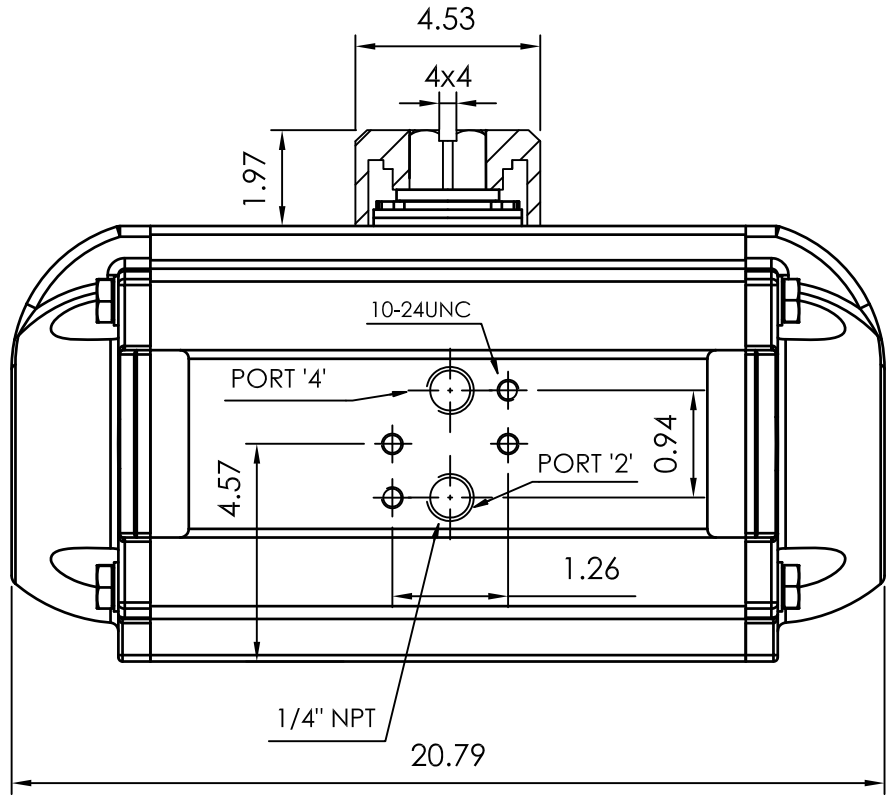
via Alla Campagna,  
24060 Costa di Mezzate(Bg) Italy  
Tel.: +39 035 682299  
Fax: +39 035 687791  
E-mail: info@airtorque.it

Technical Data Sheet n° **PT600DU**  
Issued on: 12/04

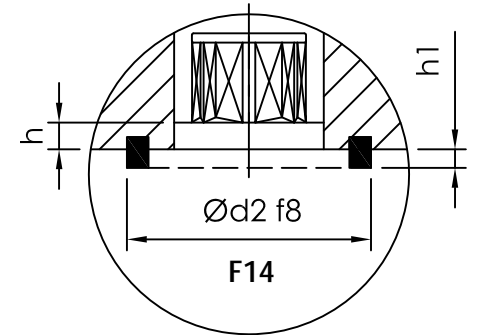
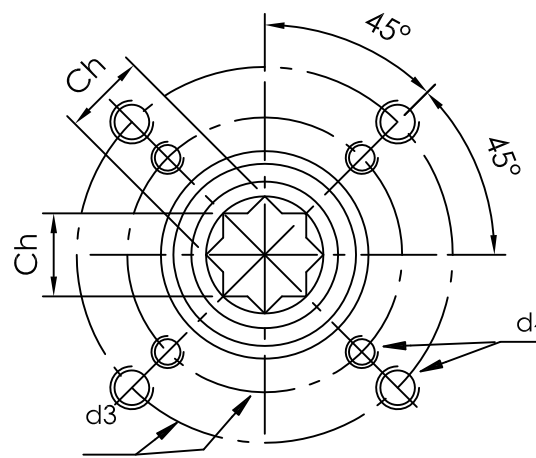
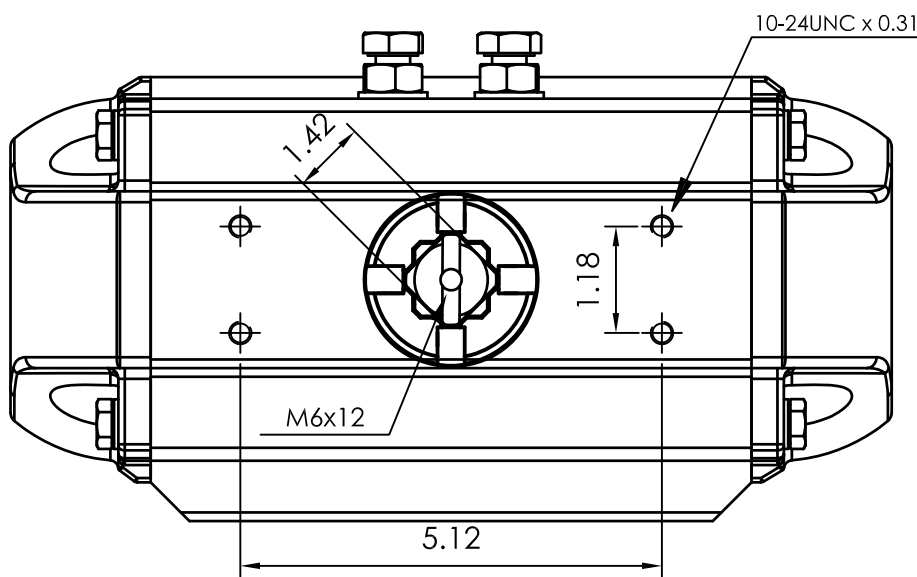
Page: 1/1

**Model PT600**  
**DA and SR - 90°**

Dimensions in inch



Flange Dimensions	
ISO 5211	F14
d2 f8	3,94
d3	5,51
d4	5/8-11UNC x 0,94
H	3,94
Ch	1,42
I min.	1,5
h min.	0,08
h1	0,12
Pressure connection	N 2
Ancillary Attachment	AA 4



Spigot available only on request

TYPE	OUTPUT TORQUE FOR DOUBLE ACTING IN INCH-LBS										WEIGHT (LBS)					
	40 Psi		50 Psi		60 Psi		70 Psi		80 Psi		90 Psi		100 Psi		116 Psi	
Pressure	0°	90°	0°	90°	0°	90°	0°	90°	0°	90°	0°	90°	0°	90°	0°	90°
D	5193.0		6492.0		7790.0		9088.0		10387.0		11685.0		12984.0		15061.0	

TYPE	OUTPUT TORQUE FOR SPRING RETURN IN INCH-LBS														Spring stroke		WEIGHT (LBS)		
	40 Psi		50 Psi		60 Psi		70 Psi		80 Psi		90 Psi		100 Psi		116 Psi			90°	0°
Pressure	0°	90°	0°	90°	0°	90°	0°	90°	0°	90°	0°	90°	0°	90°	0°	90°	Start	End	
S 05	3312	2406	4610	3704	5908	5003	7207	6301	8505	7599	9803	8898	11102	10196	13180	12275	2787	1882	89.6
S 06	2935	1849	4234	3147	5532	4445	6830	5744	8129	7042	9427	8340	10725	9639	12804	11717	3345	2258	91.1
S 07	2559	1291	3857	2589	5156	3888	6454	5186	7752	6485	9051	7783	10349	9081	12427	11159	3902	2634	92.7
S 08			3481	2032	4779	3330	6078	4629	7376	5927	8674	7225	9973	8524	12050	10601	4460	3011	94.2
S 09			3105	1475	4403	2773	5701	4071	7000	5370	8298	6668	9596	7966	11674	10044	5017	3387	95.7
S 10					4027	2216	5325	3514	6623	4812	7922	6110	9220	7409	11297	9486	5575	3763	97.2
S 11							4949	2957	6247	4255	7545	5553	8844	6851	10921	8929	6132	4140	98.7
S 12									5871	3698	7170	4996	8467	6294	10545	8371	6690	4516	100

Max. Pressure	Rotation	Screw stroke Adjustment	Chamber φ (inch)	Air Volume (in <sup>3</sup> )		Moving Time (Sec.) (A)		Operating Temperature (°F) (B)		
				Opening	Closing	Opening	Closing	STD (standard)	HT (high temperature)	LT (low temperature)
116 Psi	90° ±4° at 0° and 90°	For 1° adj. need 1/4 Turn	7,87	362	577	D 2,7 S 3,5	D 3,2 S 4,0	NBR "O" ring - 4 to + 176	FPM "O" ring + 5 to + 300	Silicone "O" ring - 40 to + 176

**Notes:**  
**(A)** The above indicated moving time of the actuator, are obtained in the following test conditions:  
 (1) Room Temperature, (2) Actuator Stroke 90°, (3) Solenoid Valve with Orifice Of 11 mm and a flow capacity Qn 6000 L/min., (4) Inside pipe diameter 11 mm, (5) Medium clean air, (6) Air supply pressure 5,5 bar (79,75 Psi), (7) Actuator without external resistance load. **Cautions: obviously on the field applications when one or more of the above parameter are different, the moving time will be different.**  
**(B)** For HT (high temperature) and LT (low temperature) services, a special Lubricant is requested. Please contact Air Torque factory.

**Operating Medium:**  
 The operating medium must be free of dust and oil. The maximum particle size must not exceed 30µm (ISO 8573 Part1, Class5). In order to prevent water condensation and/or solidification – ice, when actuator work below 0°C (32°F) – the operating medium must have a dew point equal to -20°C (- 4°F) or, at least 10°C below the ambient temperature (ISO 8573 Part1, Class3).