

AIR TORQUE

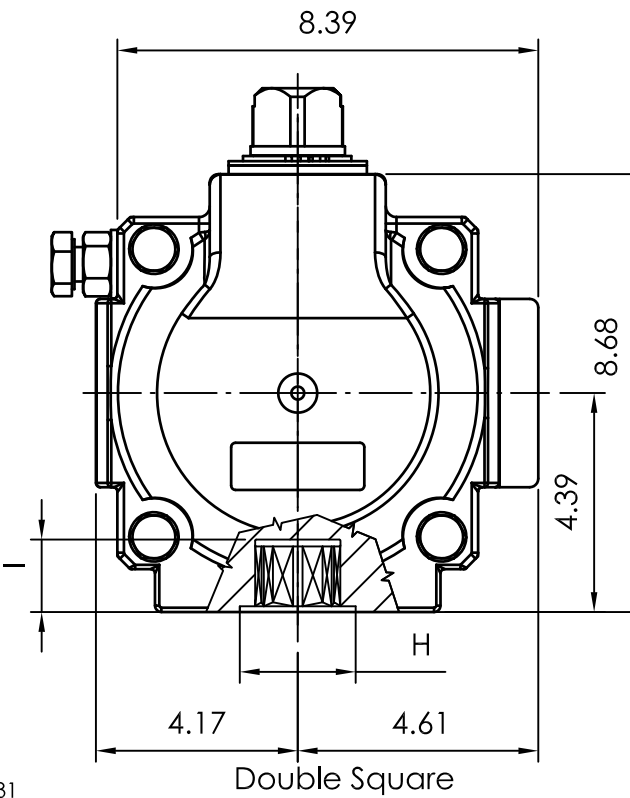
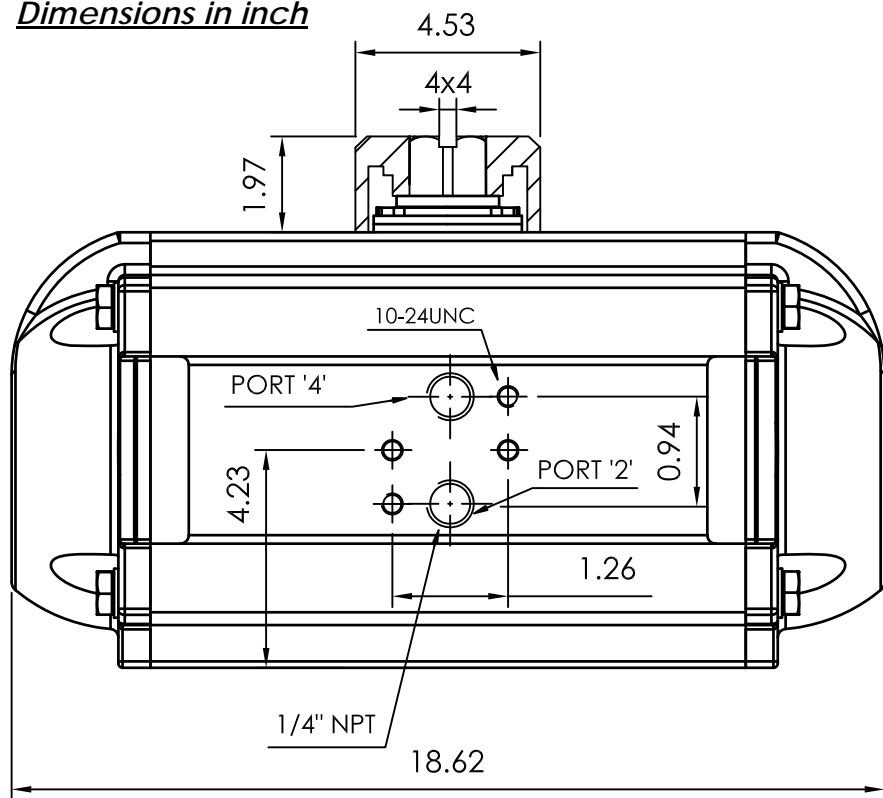
AIR TORQUE S.p.A.
 via Alla Campagna, N°1
 24060 Costa di Mezzate (Bg) Italy
 Tel.: +39 035 682299
 Fax: +39 035 687791
 E-mail: info@airtorque.it

Technical Data Sheet n° **PT550DU**
 Issued on: 02/09

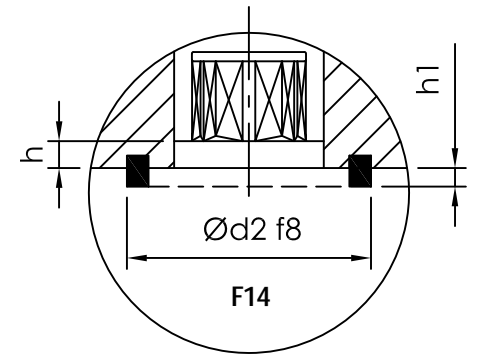
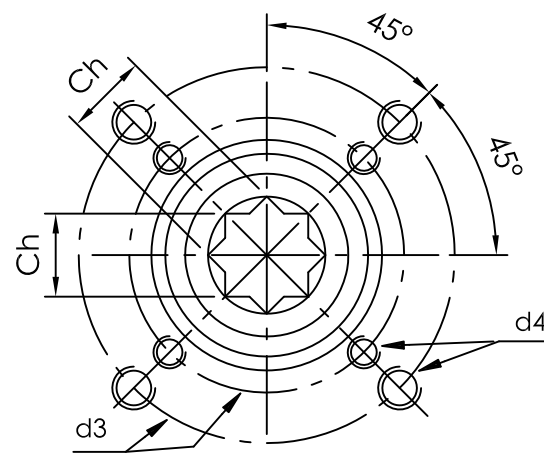
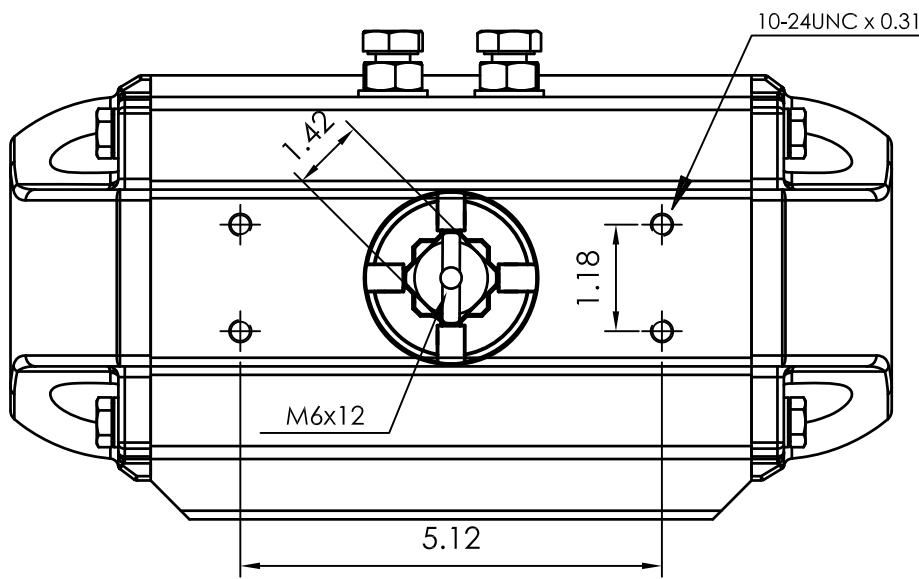
Page: 1/1

Model PT550
DA and SR - 90°

Dimensions in inch



Flange Dimensions	
ISO 5211	F14
d2 f8	3,94
d3	5,51
d4	5/8-11UNC x 0,94
H	3,94
Ch	1,42
l min.	1,5
h min.	0,08
h1	0,12
Pressure connection	N 2
Ancillary Attachment	AA 4



Spigot available only on request

TYPE	OUTPUT TORQUE FOR DOUBLE ACTING IN INCH-LBS												WEIGHT (LBS)				
	40 Psi		50 Psi		60 Psi		70 Psi		80 Psi		90 Psi			100 Psi		116 Psi	
Pressure	0°	90°	0°	90°	0°	90°	0°	90°	0°	90°	0°	90°	0°	90°	0°	90°	55.00
D	3739.0		4674.0		5609.0		6544.0		7479.0		8413.0		9348.0		10844.0		

TYPE	OUTPUT TORQUE FOR SPRING RETURN IN INCH-LBS												Spring stroke		WEIGHT (LBS)				
	40 Psi		50 Psi		60 Psi		70 Psi		80 Psi		90 Psi		100 Psi			116 Psi		90°	0°
Pressure	0°	90°	0°	90°	0°	90°	0°	90°	0°	90°	0°	90°	0°	90°	0°	90°	Start	End	
S 05	2340	1644	3275	2578	4210	3513	5145	4448	6079	5383	7014	6318	7949	7253	9445	8749	2096	1399	62.6
S 06	2060	1225	2995	2159	3930	3094	4865	4029	5800	4964	6734	5899	7669	6833	9166	8330	2515	1679	64.1
S 07	1780	805	2715	1740	3650	2675	4585	3610	5520	4545	6454	5480	7389	6414	8885	7910	2934	1959	65.6
S 08			2435	1321	3370	2256	4305	3191	5240	4126	6175	5060	7109	5995	8605	7491	3353	2239	67.2
S 09			2156	902	3090	1837	4025	2772	4960	3706	5895	4642	6830	5576	8325	7072	3772	2519	68.7
S 10					2811	1418	3745	2353	4680	3287	5615	4222	6550	5157	8045	6653	4191	2798	70.2
S 11							3468	1932	4400	2868	5335	3803	6270	4738	7766	6234	4610	3078	71.7
S 12									4121	2449	5056	3384	5990	4319	7486	5814	5029	3358	73.2

Max. Pressure	Rotation	Screw stroke Adjustment	Chamber ϕ (inch)	Air Volume (in ³)		Moving Time (Sec.) (A)		Operating Temperature (°F) (B)		
				Opening	Closing	Opening	Closing	STD (standard)	HT (high temperature)	LT (low temperature)
116 Psi	90° ±4° at 0° and 90°	For 1° adj. need 1/4 Turn	7,09	260	420	D 2,0 S 2,4	D 2,2 S 2,8	NBR "O" ring - 4 to + 176	FPM "O" ring + 5 to + 300	Silicone "O" ring - 40 to + 176

Notes:

(A) The above indicated moving time of the actuator, are obtained in the following test conditions:

(1) Room Temperature, (2) Actuator Stroke 90°, (3) Solenoid Valve with Orifice Of 11 mm and a flow capacity Qn 6000 L/min., (4) Inside pipe diameter 11 mm, (5) Medium clean air, (6) Air supply pressure 5,5 bar (79,75 Psi), (7) Actuator without external resistance load. **Cautions: obviously on the field applications when one or more of the above parameter are different, the moving time will be different.**

(B) For HT (high temperature) and LT (low temperature) services, a special Lubricant is requested. Please contact Air Torque factory.

Operating Medium:

The operating medium must be free of dust and oil. The maximum particle size must not exceed 30µm (ISO 8573 Part1, Class5). In order to prevent water condensation and/or solidification – ice, when actuator work below 0°C (32°F) –, the operating medium must have a dew point equal to -20°C (- 4°F) or, at least 10°C below the ambient temperature (ISO 8573 Part1, Class3).