



AIR TORQUE

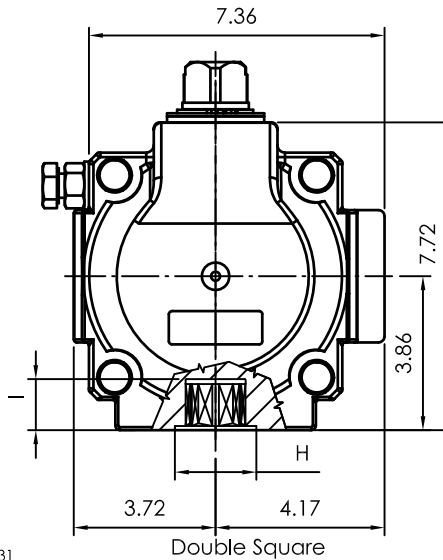
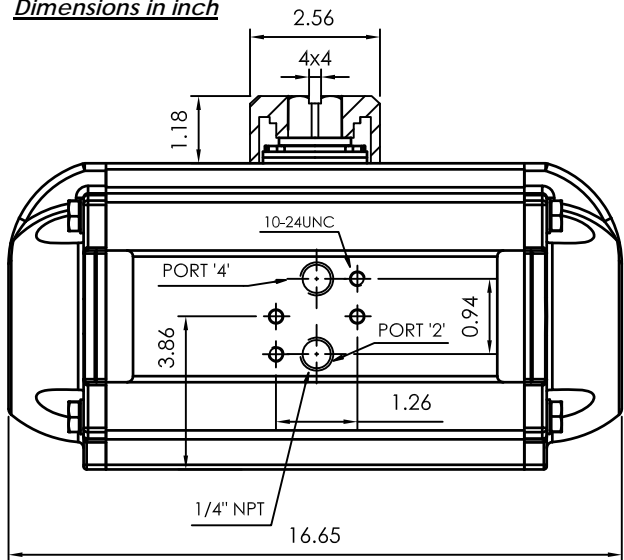
AIR TORQUE S.p.A.
 via Alla Campagna, N°1
 24060 Costa di Mezzate(Bg) Italy
 Tel.: +39 035 682299
 Fax: +39 035 687791
 E-mail: info@airtorque.it

Technical Data Sheet n° **PT500DU**
 Issued on: 12/04

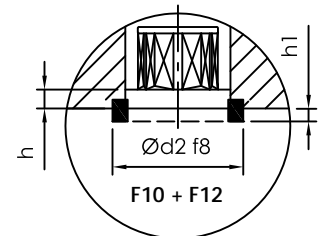
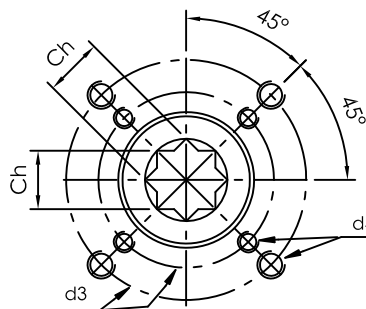
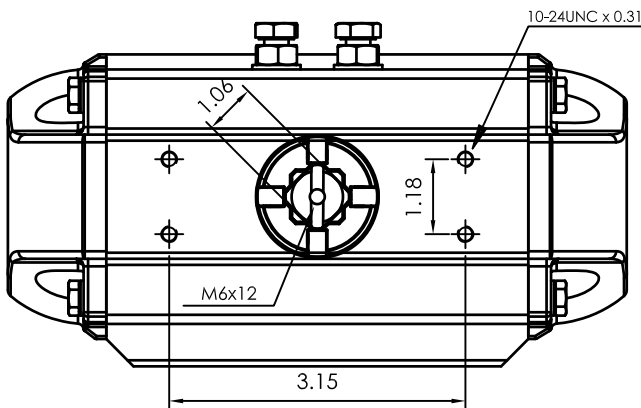
Page: 1/1

Model PT500
DA and SR - 90°

Dimensions in inch



| Flange Dimensions | |
|----------------------|--------------------------------------|
| ISO 5211 | F10 + F12 |
| d2 f8 | 2,75 |
| d3 | 4,02 + 4,92 |
| d4 | 3/8-16UNC x 0,59 1/2-13UNC x 0,71 |
| H | 2,75 |
| Ch | 1,06 |
| l min. | 1,14 |
| h min. | 0,06 |
| h1 | 0,12 |
| Pressure connection | N 2 |
| Ancillary Attachment | AA 2 |



Spigot available only on request

| TYPE | OUTPUT TORQUE FOR DOUBLE ACTING IN INCH-LBS | | | | | | | | | WEIGHT (LBS) | | | | | | | |
|----------|---|-----|--------|-----|--------|-----|--------|-----|--------|--------------|--------|-----|---------|-----|---------|-----|-------|
| | 40 Psi | | 50 Psi | | 60 Psi | | 70 Psi | | 80 Psi | | 90 Psi | | 100 Psi | | 116 Psi | | |
| Pressure | 0° | 90° | 0° | 90° | 0° | 90° | 0° | 90° | 0° | 90° | 0° | 90° | 0° | 90° | 0° | 90° | |
| D | 2770.0 | | 3462.0 | | 4155.0 | | 4847.0 | | 5540.0 | | 6232.0 | | 6925.0 | | 8032.0 | | 43.20 |

| TYPE | OUTPUT TORQUE FOR SPRING RETURN IN INCH-LBS | | | | | | | | | | | | | | | | Spring stroke | | WEIGHT (LBS) |
|----------|---|------|--------|------|--------|------|--------|------|--------|------|--------|------|---------|------|---------|------|---------------|------|--------------|
| | 40 Psi | | 50 Psi | | 60 Psi | | 70 Psi | | 80 Psi | | 90 Psi | | 100 Psi | | 116 Psi | | 90° | 0° | |
| Pressure | 0° | 90° | 0° | 90° | 0° | 90° | 0° | 90° | 0° | 90° | 0° | 90° | 0° | 90° | 0° | 90° | Start | End | |
| S 05 | 1777 | 1300 | 2469 | 1992 | 3162 | 2685 | 3854 | 3377 | 4547 | 4070 | 5239 | 4762 | 5931 | 5455 | 7040 | 6563 | 1470 | 993 | 47.0 |
| S 06 | 1578 | 1006 | 2271 | 1698 | 2963 | 2391 | 3655 | 3083 | 4348 | 3776 | 5040 | 4468 | 5733 | 5161 | 6841 | 6269 | 1764 | 1192 | 47.8 |
| S 07 | 1380 | 712 | 2072 | 1404 | 2764 | 2097 | 3457 | 2789 | 4149 | 3482 | 4842 | 4174 | 5534 | 4867 | 6642 | 5975 | 2058 | 1390 | 48.6 |
| S 08 | | | 1873 | 1110 | 2566 | 1803 | 3258 | 2495 | 3951 | 3188 | 4643 | 3880 | 5336 | 4573 | 6444 | 5681 | 2352 | 1589 | 49.3 |
| S 09 | | | 1675 | 817 | 2367 | 1509 | 3060 | 2201 | 3752 | 2894 | 4445 | 3586 | 5137 | 4279 | 6245 | 5387 | 2646 | 1788 | 50.1 |
| S 10 | | | | | 2169 | 1215 | 2861 | 1907 | 3553 | 2600 | 4246 | 3292 | 4938 | 3985 | 6046 | 5093 | 2940 | 1986 | 50.9 |
| S 11 | | | | | | | 2663 | 1614 | 3355 | 2306 | 4047 | 2998 | 4740 | 3691 | 5848 | 4799 | 3234 | 2185 | 51.6 |
| S 12 | | | | | | | | | 3157 | 2012 | 3849 | 2705 | 4541 | 3397 | 5649 | 4505 | 3528 | 2383 | 52.4 |

| Max. Pressure | Rotation | Screw stroke Adjustment | Chamber φ (inch) | Air Volume (in ³) | | Moving Time (Sec.) (A) | | Operating Temperature (°F) (B) | | |
|---------------|--------------------------|------------------------------|------------------|-------------------------------|---------|------------------------|----------------|--------------------------------|------------------------------|------------------------------------|
| | | | | Opening | Closing | Opening | Closing | STD (standard) | HT (high temperature) | LT (low temperature) |
| 116 Psi | 90° ±4° at 0° and 90° | For 1° adj. need 1/4 Turn | 6,30 | 192 | 300 | D 1,5 S 1,8 | D 1,7 S 2,1 | NBR "O" ring - 4 to + 176 | FPM "O" ring + 5 to + 300 | Silicone "O" ring - 40 to + 176 |

- Notes:**
- (A) The above indicated moving time of the actuator, are obtained in the following test conditions:
 (1) Room Temperature, (2) Actuator Stroke 90°, (3) Solenoid Valve with Orifice Of 4 mm and a flow capacity Qn 400 L/min., (4) Inside pipe diameter 8 mm, (5) Medium clean air, (6) Air supply pressure 5,5 bar (79,75 Psi), (7) Actuator without external resistance load. **Cautions: obviously on the field applications when one or more of the above parameter are different, the moving time will be different.**
- (B) For HT (high temperature) and LT (low temperature) services, a special Lubricant is requested. Please contact Air Torque factory.

Operating Medium:
 The operating medium must be free of dust and oil. The maximum particle size must not exceed 30µm (ISO 8573 Part1, Class5). In order to prevent water condensation and/or solidification – ice, when actuator work below 0°C (32°F) – the operating medium must have a dew point equal to -20°C (-4°F) or, at least 10°C below the ambient temperature (ISO 8573 Part1, Class3).