

AIR TORQUE

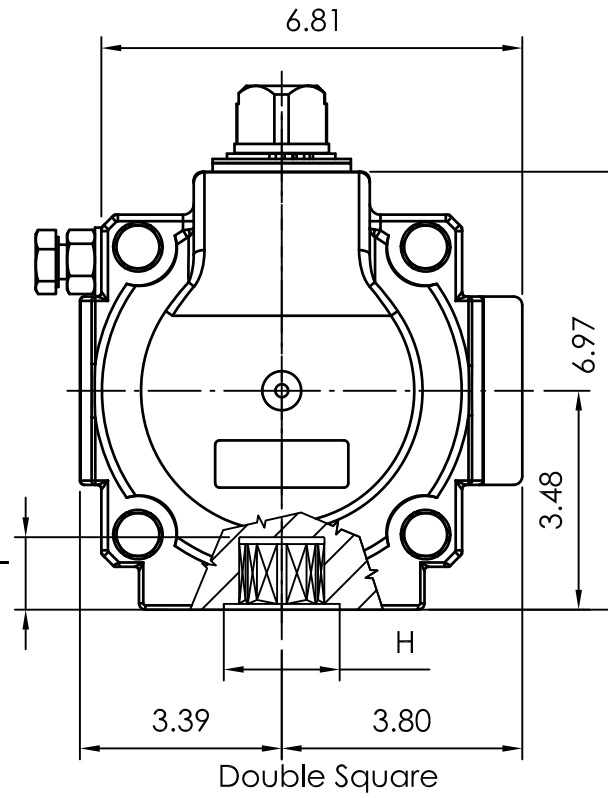
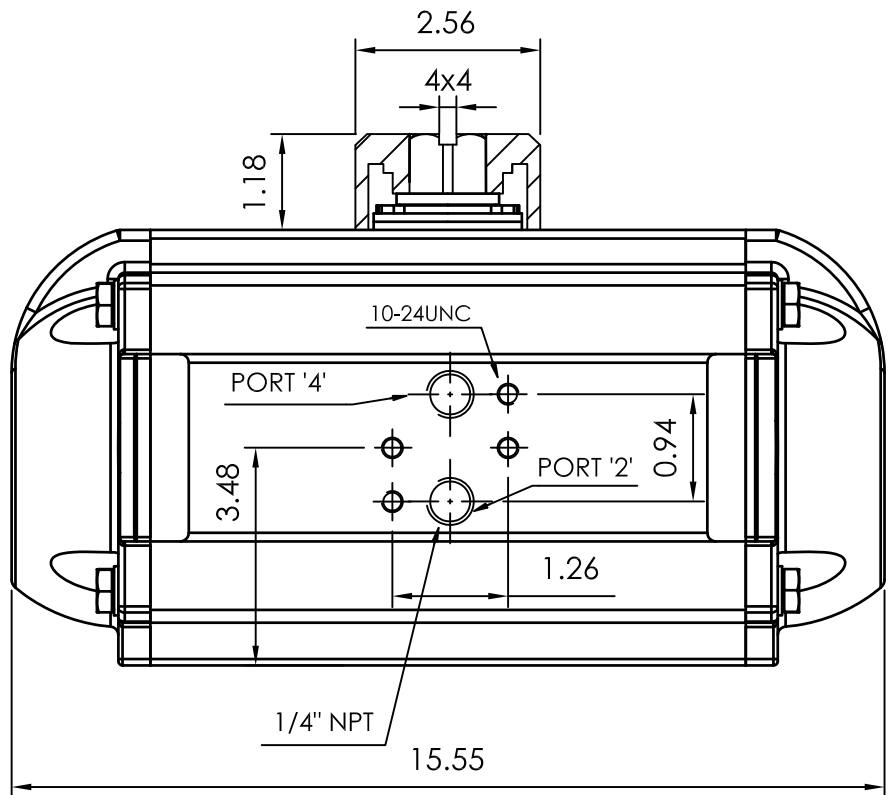
AIR TORQUE S.p.A.
 via Alla Campagna, N°1
 24060 Costa di Mezzate (Bg) Italy
 Tel.: +39 035 682299
 Fax: +39 035 687791
 E-mail: info@airtorque.it

Technical Data Sheet n°PT450DU
 Issued on: 12/04

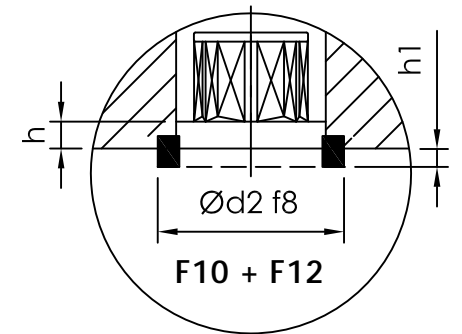
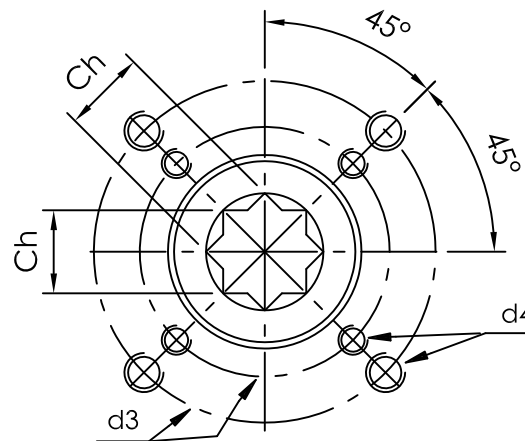
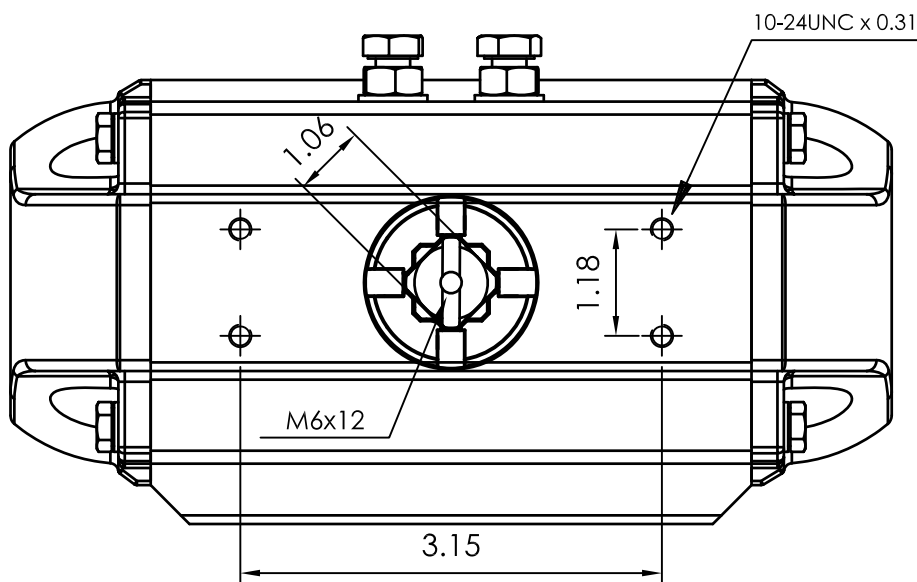
Page: 1/1

Model PT450
DA and SR - 90°

Dimensions in inch



Flange Dimensions	
ISO 5211	F10 + F12
d2 f8	2,75
d3	4,02 + 4,92
d4	3/8-16UNC x 0,59 1/2-13UNC x 0,71
H	2,75
Ch	1,06
I min.	1,14
h min.	0,06
h1	0,12
Pressure connection	N 2
Ancillary Attachment	AA 2



Spigot available only on request

TYPE	OUTPUT TORQUE FOR DOUBLE ACTING IN INCH-LBS								WEIGHT (LBS)								
	40 Psi		50 Psi		60 Psi		70 Psi			80 Psi		90 Psi		100 Psi		116 Psi	
Pressure	0°	90°	0°	90°	0°	90°	0°	90°	0°	90°	0°	90°	0°	90°	0°	90°	34.20
D	2123.0		2654.0		3185.0		3716.0		4246.0		4777.0		5308.0		6157.0		

TYPE	OUTPUT TORQUE FOR SPRING RETURN IN INCH-LBS														Spring stroke		WEIGHT (LBS)		
	40 Psi		50 Psi		60 Psi		70 Psi		80 Psi		90 Psi		100 Psi		116 Psi			90°	0°
Pressure	0°	90°	0°	90°	0°	90°	0°	90°	0°	90°	0°	90°	0°	90°	0°	90°	Start	End	
S 05	1394	983	1925	1514	2456	2044	2987	2575	3517	3106	4048	3637	4579	4167	5429	5017	1140	729	37.2
S 06	1248	755	1779	1285	2310	1816	2841	2347	3372	2878	3902	3409	4433	3939	5283	4789	1369	875	37.7
S 07	1103	527	1633	1057	2164	1588	2695	2119	3226	2650	3757	3181	4287	3711	5137	4561	1597	1021	38.3
S 08			1488	829	2018	1360	2549	1891	3080	2422	3611	2952	4142	3483	4991	4333	1825	1166	38.9
S 09			1342	601	1873	1132	2403	1663	2934	2194	3465	2724	3996	3255	4845	4104	2053	1312	39.5
S 10					1727	904	2258	1435	2788	1965	3319	2496	3850	3027	4699	3876	2281	1458	40.1
S 11							2112	1207	2643	1737	3173	2268	3704	2799	4553	3648	2509	1604	40.7
S 12									2497	1509	3028	2040	3558	2571	4408	3420	2737	1750	41.3

Max. Pressure	Rotation	Screw stroke Adjustment	Chamber φ (inch)	Air Volume (in ³)		Moving Time (Sec.) (A)		Operating Temperature (°F) (B)		
				Opening	Closing	Opening	Closing	STD (standard)	HT (high temperature)	LT (low temperature)
116 Psi	90° ±4° at 0° and 90°	For 1° adj. need 1/5 Turn	5,71	147	231	D 1,2 S 1,5	D 1,4 S 1,8	NBR "O" ring - 4 to + 176	FPM "O" ring + 5 to + 300	Silicone "O" ring - 40 to + 176

Notes:

- (A) The above indicated moving time of the actuator, are obtained in the following test conditions:
 (1) Room Temperature, (2) Actuator Stroke 90°, (3) Solenoid Valve with Orifice Of 4 mm and a flow capacity Qn 400 L/min., (4) Inside pipe diameter 8 mm, (5) Medium clean air, (6) Air supply pressure 5,5 bar (79,75 Psi), (7) Actuator without external resistance load. **Cautions: obviously on the field applications when one or more of the above parameter are different, the moving time will be different.**
- (B) For HT (high temperature) and LT (low temperature) services, a special Lubricant is requested. Please contact Air Torque factory.

Operating Medium:

The operating medium must be free of dust and oil. The maximum particle size must not exceed 30µm (ISO 8573 Part1, Class5). In order to prevent water condensation and/or solidification – ice, when actuator work below 0°C (32°F) – the operating medium must have a dew point equal to -20°C (-4°F) or, at least 10°C below the ambient temperature (ISO 8573 Part1, Class3).