

AIR TORQUE

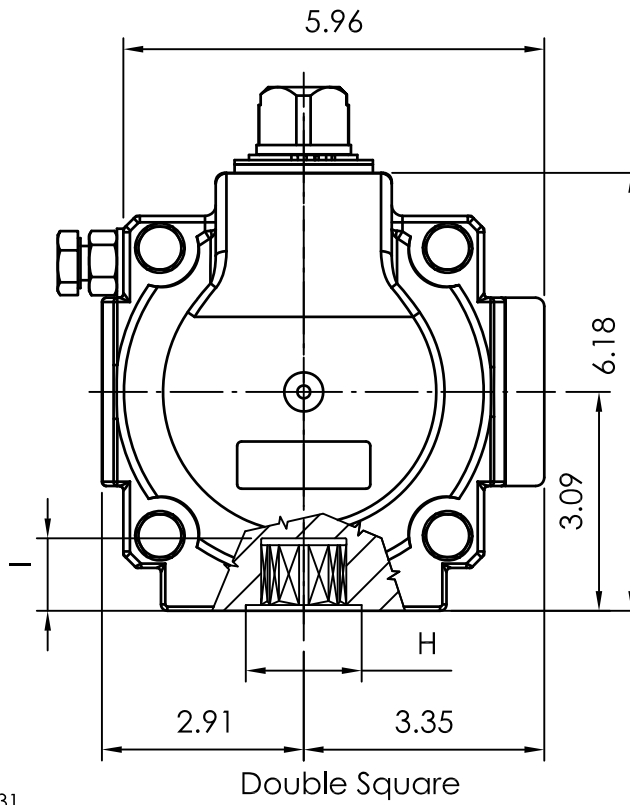
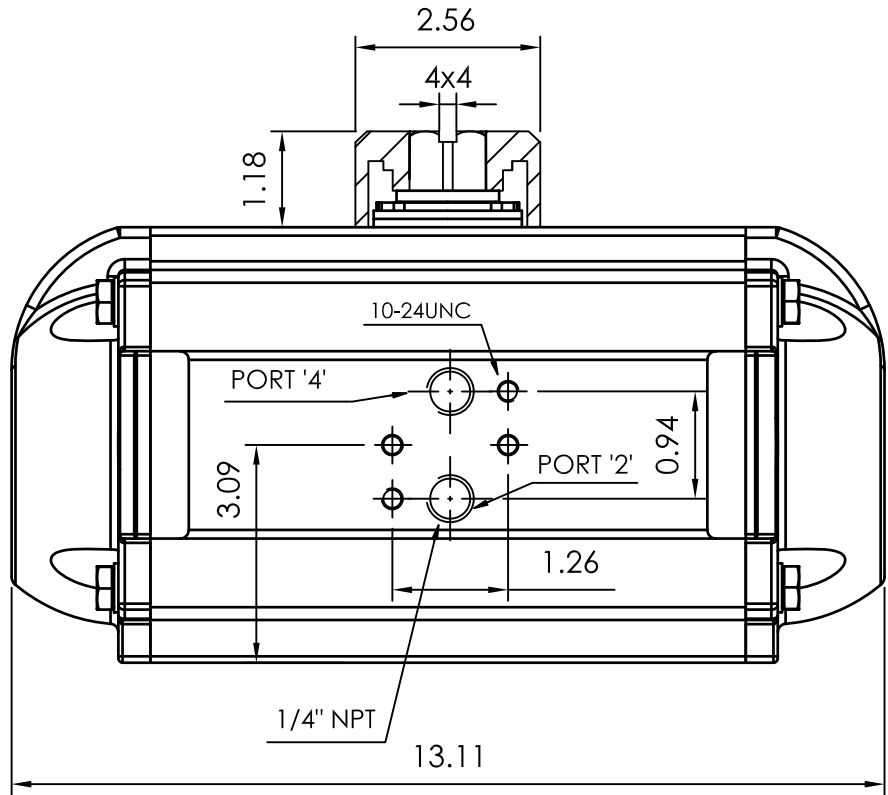
AIR TORQUE S.p.A.
 via Alla Campagna, N°1
 24060 Costa di Mezzate(Bg) Italy
 Tel.: +39 035 682299
 Fax: +39 035 687791
 E-mail: info@airtorque.it

Technical Data Sheet n° **PT400DU**
 Issued on: 12/04

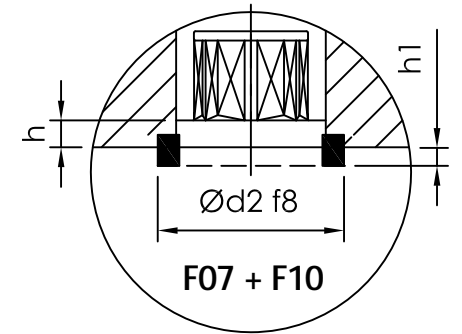
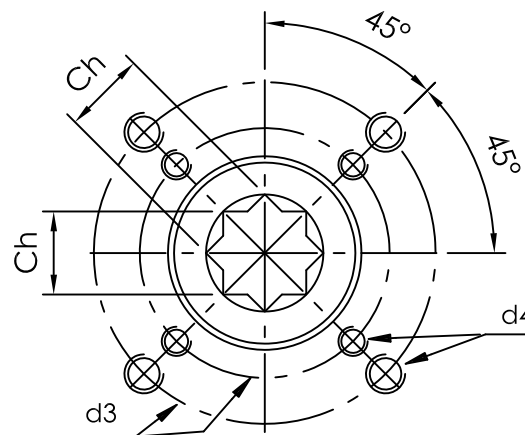
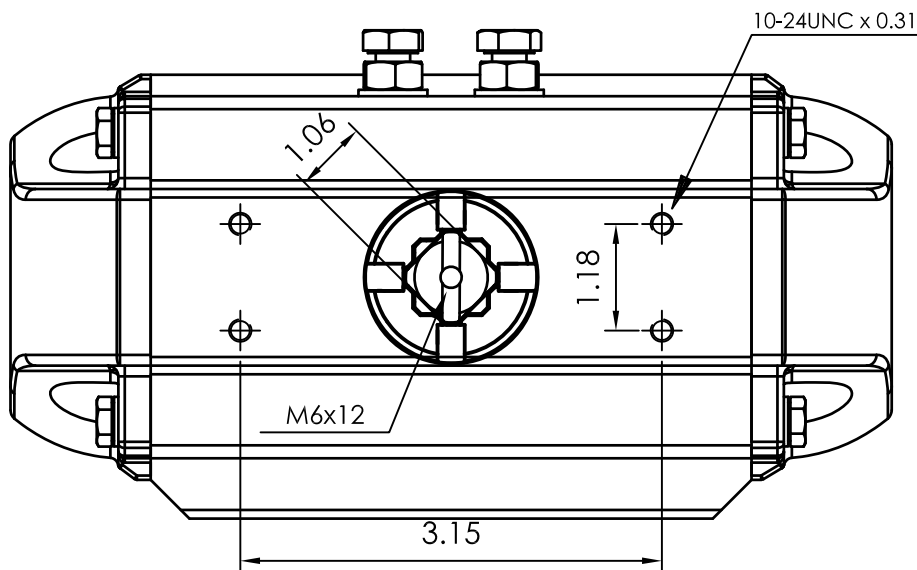
Page: 1/1

Model PT400
DA and SR - 90°

Dimensions in inch



| Flange Dimensions | |
|----------------------|---------------------------------------|
| ISO 5211 | F07 + F10 |
| d2 f8 | 2,17 |
| d3 | 2,76 + 4,02 |
| d4 | 5/16-18UNC x 0,47 3/8-16UNC x 0,59 |
| H | 2,17 |
| Ch | 0,87 |
| I min. | 0,94 |
| h min. | 0,06 |
| h1 | 0,1 |
| Pressure connection | N 2 |
| Ancillary Attachment | AA 2 |



Spigot available only on request

| TYPE | OUTPUT TORQUE FOR DOUBLE ACTING IN INCH-LBS | | | | | | | | | | | | | | | | WEIGHT (LBS) | |
|----------|---|-----|--------|-----|--------|-----|--------|-----|--------|-----|--------|-----|---------|-----|---------|-----|--------------|--|
| | 40 Psi | | 50 Psi | | 60 Psi | | 70 Psi | | 80 Psi | | 90 Psi | | 100 Psi | | 116 Psi | | | |
| Pressure | 0° | 90° | 0° | 90° | 0° | 90° | 0° | 90° | 0° | 90° | 0° | 90° | 0° | 90° | 0° | 90° | | |
| D | 1352.0 | | 1691.0 | | 2029.0 | | 2367.0 | | 2705.0 | | 3043.0 | | 3381.0 | | 3922.0 | | 23.70 | |

| TYPE | OUTPUT TORQUE FOR SPRING RETURN IN INCH-LBS | | | | | | | | | | | | | | | | Spring stroke | | WEIGHT (LBS) |
|----------|---|-----|--------|-----|--------|------|--------|------|--------|------|--------|------|---------|------|---------|------|---------------|------|--------------|
| | 40 Psi | | 50 Psi | | 60 Psi | | 70 Psi | | 80 Psi | | 90 Psi | | 100 Psi | | 116 Psi | | 90° | 0° | |
| Pressure | 0° | 90° | 0° | 90° | 0° | 90° | 0° | 90° | 0° | 90° | 0° | 90° | 0° | 90° | 0° | 90° | Start | End | |
| S 05 | 888 | 623 | 1226 | 961 | 1564 | 1299 | 1902 | 1637 | 2240 | 1976 | 2578 | 2314 | 2916 | 2652 | 3458 | 3193 | 729 | 465 | 25.4 |
| S 06 | 795 | 477 | 1133 | 815 | 1471 | 1154 | 1809 | 1492 | 2147 | 1830 | 2485 | 2168 | 2823 | 2506 | 3365 | 3047 | 875 | 558 | 25.7 |
| S 07 | 702 | 331 | 1040 | 670 | 1378 | 1008 | 1716 | 1346 | 2054 | 1684 | 2392 | 2022 | 2730 | 2360 | 3271 | 2901 | 1021 | 651 | 26.1 |
| S 08 | | | 947 | 524 | 1285 | 862 | 1623 | 1200 | 1961 | 1538 | 2299 | 1876 | 2637 | 2214 | 3178 | 2755 | 1167 | 744 | 26.4 |
| S 09 | | | 854 | 378 | 1192 | 716 | 1530 | 1054 | 1868 | 1392 | 2206 | 1730 | 2544 | 2068 | 3085 | 2609 | 1313 | 837 | 26.8 |
| S 10 | | | | | 1099 | 570 | 1437 | 908 | 1775 | 1246 | 2113 | 1584 | 2452 | 1923 | 2993 | 2464 | 1459 | 930 | 27.1 |
| S 11 | | | | | | | 1344 | 762 | 1682 | 1100 | 2020 | 1439 | 2359 | 1777 | 2900 | 2318 | 1604 | 1023 | 27.5 |
| S 12 | | | | | | | | | 1590 | 955 | 1928 | 1293 | 2266 | 1631 | 2807 | 2172 | 1750 | 1116 | 27.8 |

| Max. Pressure | Rotation | Screw stroke Adjustment | Chamber ϕ (inch) | Air Volume (in ³) | | Moving Time (Sec.) (A) | | Operating Temperature (°F) (B) | | |
|---------------|--------------------------|------------------------------|-----------------------|-------------------------------|---------|------------------------|----------------|--------------------------------|------------------------------|------------------------------------|
| | | | | Opening | Closing | Opening | Closing | STD (standard) | HT (high temperature) | LT (low temperature) |
| 116 Psi | 90° ±4° at 0° and 90° | For 1° adj. need 1/4 Turn | 4,92 | 94 | 143 | D 0,9 S 1,2 | D 1,1 S 1,4 | NBR "O" ring - 4 to + 176 | FPM "O" ring + 5 to + 300 | Silicone "O" ring - 40 to + 176 |

Notes:
(A) The above indicated moving time of the actuator, are obtained in the following test conditions:
 (1) Room Temperature, (2) Actuator Stroke 90°, (3) Solenoid Valve with Orifice Of 4 mm and a flow capacity Qn 400 L/min., (4) Inside pipe diameter 8 mm, (5) Medium clean air, (6) Air supply pressure 5,5 bar (79,75 Psi), (7) Actuator without external resistance load. **Cautions: obviously on the field applications when one or more of the above parameter are different, the moving time will be different.**
(B) For HT (high temperature) and LT (low temperature) services, a special Lubricant is requested. Please contact Air Torque factory.

Operating Medium:
 The operating medium must be free of dust and oil. The maximum particle size must not exceed 30µm (ISO 8573 Part1, Class5). In order to prevent water condensation and/or solidification – ice, when actuator work below 0°C (32°F) – the operating medium must have a dew point equal to -20°C (-4°F) or, at least 10°C below the ambient temperature (ISO 8573 Part1, Class3).