

# AIR TORQUE

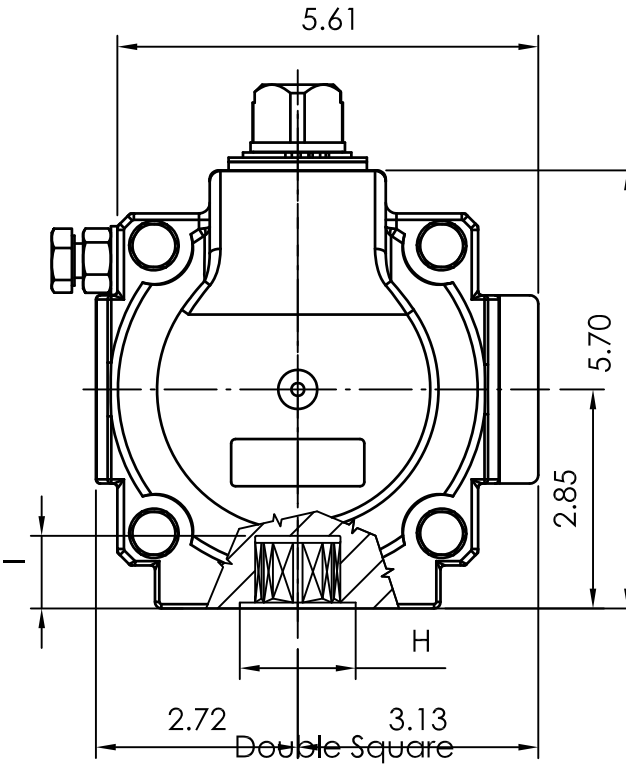
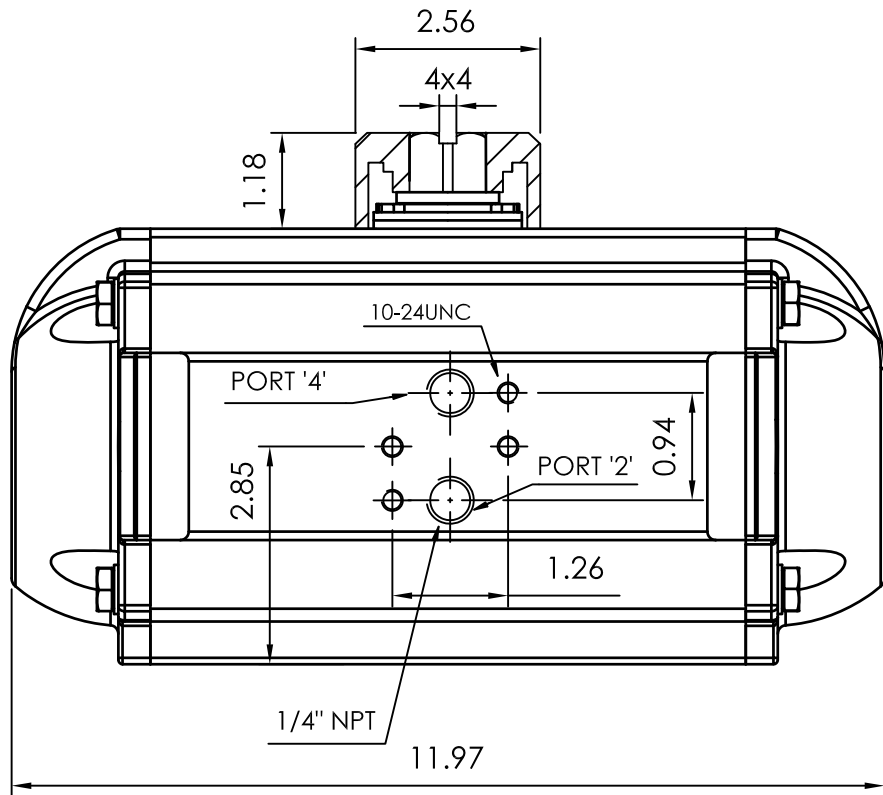
**AIR TORQUE S.p.A.**  
 via Alla Campagna, N° 1  
 24060 Costa di Mezzate(Bg) Italy  
 Tel.: +39 035 682299  
 Fax: +39 035 687791  
 E-mail: info@airtorque.it

Technical Data Sheet n° **PT350DU**  
 Issued on: 12/04

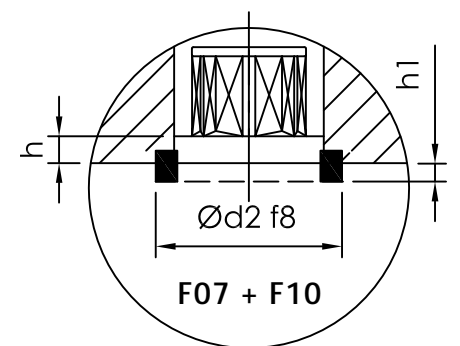
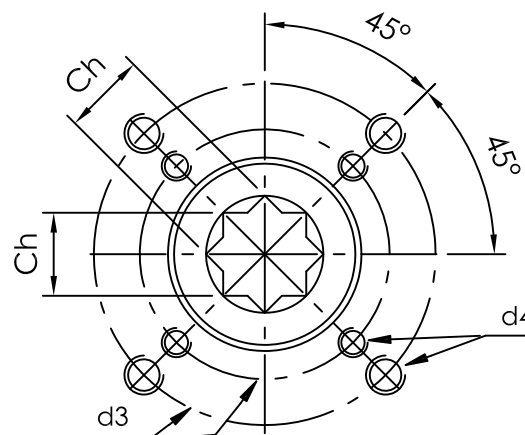
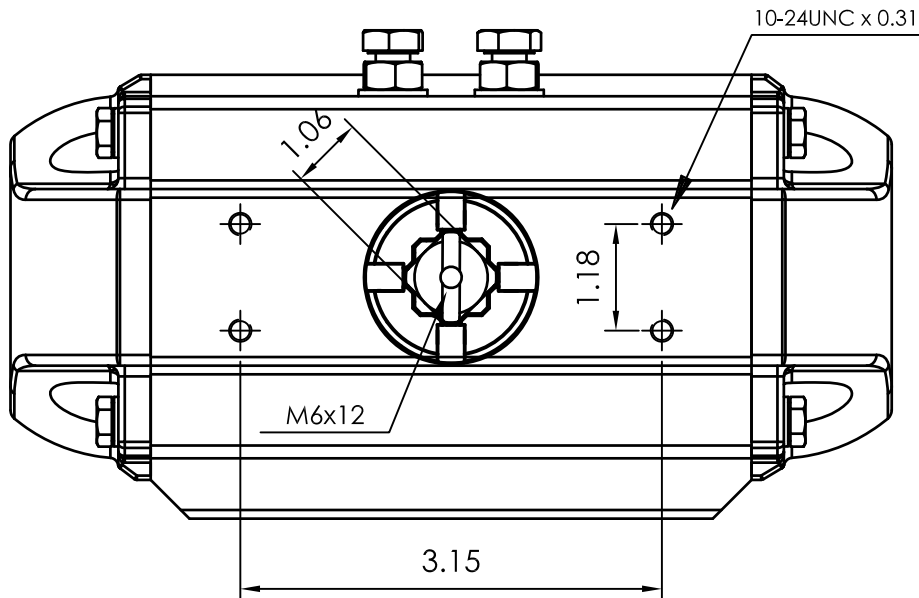
Page: 1/1

**Model PT350**  
**DA and SR - 90°**

Dimensions in inch



Flange Dimensions	
ISO 5211	F07 + F10
d2 f8	2,17
d3	2,76 + 4,02
d4	5/16-18UNC x 0,47 3/8-16UNC x 0,59
H	2,17
Ch	0,87
l min.	0,94
h min.	0,06
h1	0,1
Pressure connection	N 2
Ancillary Attachment	AA 2



Spigot available only on request

TYPE	OUTPUT TORQUE FOR DOUBLE ACTING IN INCH-LBS									WEIGHT (LBS)							
	40 Psi		50 Psi		60 Psi		70 Psi		80 Psi		90 Psi		100 Psi		116 Psi		
Pressure	0°	90°	0°	90°	0°	90°	0°	90°	0°	90°	0°	90°	0°	90°	0°	90°	
D	1049.0		1312.0		1574.0		1836.0		2099.0		2361.0		2623.0		3043.0		19.50

TYPE	OUTPUT TORQUE FOR SPRING RETURN IN INCH-LBS																Spring stroke	WEIGHT (LBS)	
	40 Psi		50 Psi		60 Psi		70 Psi		80 Psi		90 Psi		100 Psi		116 Psi				
Pressure	0°	90°	0°	90°	0°	90°	0°	90°	0°	90°	0°	90°	0°	90°	0°	90°	90°	0°	
	Start	End	Start	End	Start	End	Start	End	Start	End	Start	End	Start	End	Start	End			
S 05	687.0	470.0	949.0	732.0	1211.0	994.0	1474.0	1257.0	1736.0	1519.0	1998.0	1781.0	2260.0	2044.0	2680.5	2463.4	580.0	363.0	20.7
S 06	614.0	354.0	876.0	616.0	1139.0	878.0	1401.0	1141.0	1663.0	1403.0	1926.0	1665.0	2188.0	1928.0	2607.9	2347.5	696.0	435.0	21.0
S 07	541.0	238.0	804.0	500.0	1066.0	762.0	1328.0	1025.0	1591.0	1287.0	1853.0	1549.0	2115.0	1812.0	2535.0	2231.0	812.0	508.0	21.2
S 08			731.0	384.0	993.0	646.0	1256.0	909.0	1518.0	1171.0	1780.0	1433.0	2043.0	1696.0	2463.0	2115.0	928.0	581.0	21.5
S 09			658.6	268.0	921.0	530.0	1183.0	793.0	1446.0	1055.0	1708.0	1317.0	1970.0	1580.0	2390.0	1999.0	1044.0	653.0	21.7
S 10					848.4	414.4	1111.0	677.0	1373.0	939.0	1635.0	1201.0	1898.0	1464.0	2317.0	1883.0	1160.0	726.0	22.0
S 11					775.9	298.4	1038.2	560.8	1300.0	823.0	1563.0	1085.0	1825.0	1348.0	2245.0	1767.0	1276.0	798.0	22.3
S 12							965.6	444.8	1228.0	707.2	1490.3	969.5	1753.0	1232.0	2172.0	1652.0	1392.0	871.0	22.5

Max. Pressure	Rotation	Screw stroke Adjustment	Chamber φ (inch)	Air Volume (in <sup>3</sup> )		Moving Time (Sec.) (A)		Operating Temperature (°F) (B)		
				Opening	Closing	Opening	Closing	STD (standard)	HT (high temperature)	LT (low temperature)
116 Psi	90° ±4° at 0° and 90°	For 1° adj. need 1/5 Turn	4,53	72,6	109,8	D 0,7 S 0,9	D 0,8 S 1,1	NBR "O" ring - 4 to + 176	FPM "O" ring + 5 to + 300	Silicone "O" ring - 40 to + 176

**Notes:**  
 (A) The above indicated moving time of the actuator, are obtained in the following test conditions:  
 (1) Room Temperature, (2) Actuator Stroke 90°, (3) Solenoid Valve with Orifice Of 4 mm and a flow capacity Qn 400 L/min., (4) Inside pipe diameter 8 mm, (5) Medium clean air, (6) Air supply pressure 5,5 bar (79,75 Psi), (7) Actuator without external resistance load. **Cautions: obviously on the field applications when one or more of the above parameter are different, the moving time will be different.**  
 (B) For HT (high temperature) and LT (low temperature) services, a special Lubricant is requested. Please contact Air Torque factory.

**Operating Medium:**  
 The operating medium must be free of dust and oil. The maximum particle size must not exceed 30µm (ISO 8573 Part1, Class5). In order to prevent water condensation and/or solidification – ice, when actuator work below 0°C (32°F) – the operating medium must have a dew point equal to –20°C (– 4°F) or, at least 10°C below the ambient temperature (ISO 8573 Part1, Class3).