

AIR TORQUE

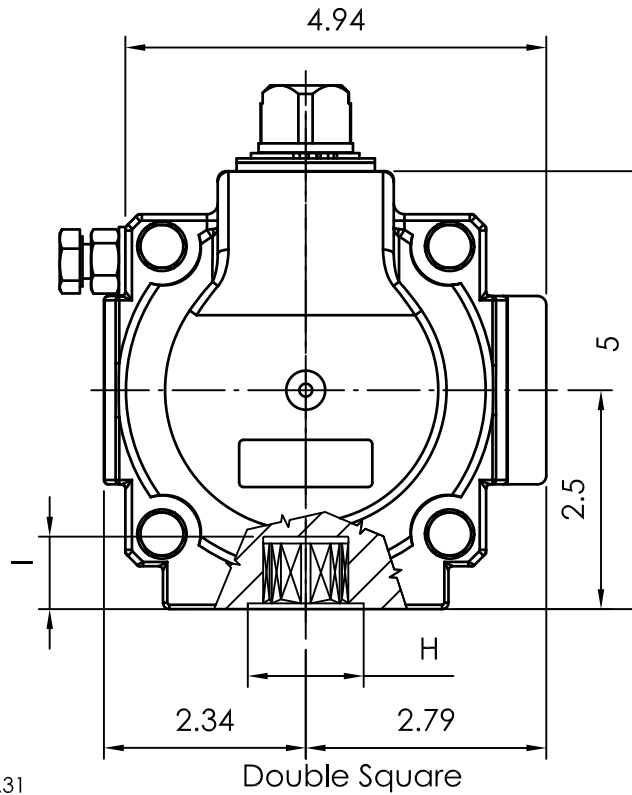
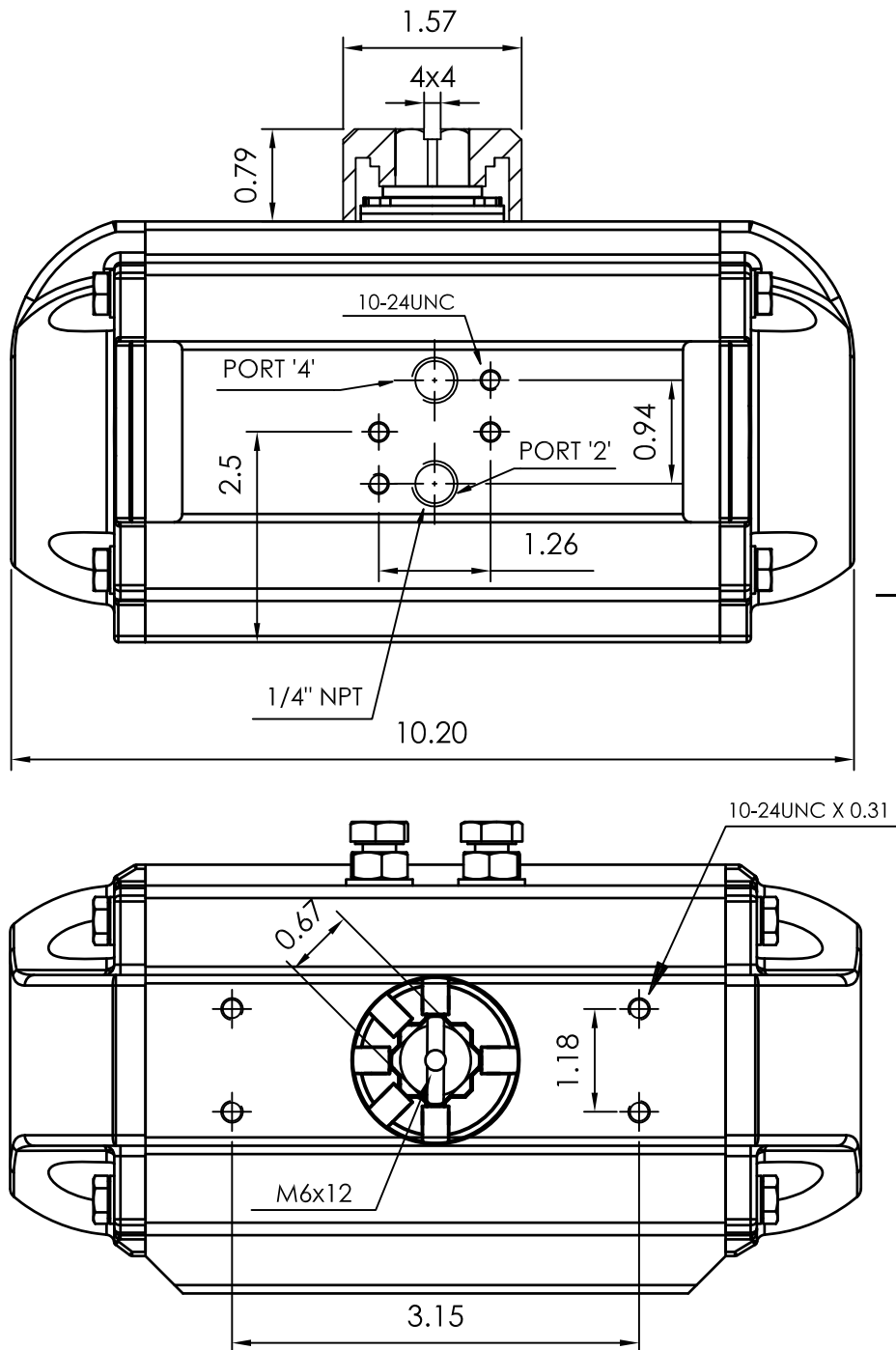
AIR TORQUE S.p.A.
 via Alla Campagna, N°1
 24060 Costa di Mezzate(Bg) Italy
 Tel.: +39 035 682299
 Fax: +39 035 687791
 E-mail: info@airtorque.it

Technical Data Sheet n°PT300DU
 Issued on: 12/04

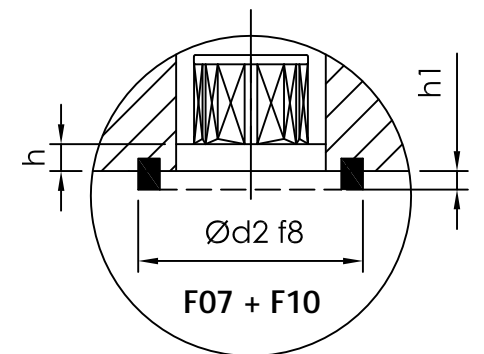
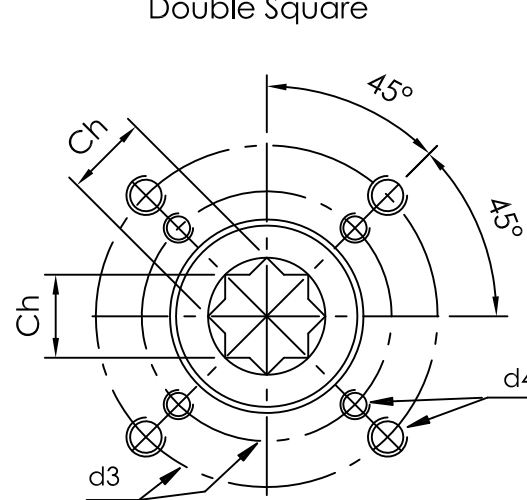
Page: 1/1

Model PT300
DA and SR - 90°

Dimensions in inch



Flange Dimensions	
ISO 5211	F07+F10
d2 f8	2,17(Only F07)
d3	2,75 + 4,01
d4	5/16-18UNC x 0,47 3/8-16UNC x 0,6
H	2,17
Ch	0,67
I min.	0,75
h min.	0,06
h1	0,08
Pressure connection	N 2
Ancillary Attachment	AA 1



Spigot available only on request

TYPE	OUTPUT TORQUE FOR DOUBLE ACTING IN INCH-LBS										WEIGHT (LBS)					
	40 Psi		50 Psi		60 Psi		70 Psi		80 Psi		90 Psi		100 Psi		116 Psi	
Pressure	0°	90°	0°	90°	0°	90°	0°	90°	0°	90°	0°	90°	0°	90°	0°	90°
D	649.0		811.0		974.0		1136.0		1298.0		1461.0		1623.0		1883.0	

TYPE	OUTPUT TORQUE FOR SPRING RETURN IN INCH-LBS														Spring stroke		WEIGHT (LBS)		
	40 Psi		50 Psi		60 Psi		70 Psi		80 Psi		90 Psi		100 Psi		116 Psi			90°	0°
Pressure	0°	90°	0°	90°	0°	90°	0°	90°	0°	90°	0°	90°	0°	90°	0°	90°	Start	End	
S 05	425.0	301.0	587.0	463.0	750.0	625.0	912.0	787.0	1074.0	950.0	1236.0	1112.0	1399.0	1274.0	1658.5	1534.1	349.0	224.0	13.3
S 06	380.0	231.0	542.0	393.0	705.0	555.0	867.0	718.0	1029.0	880.0	1192.0	1042.0	1354.0	1205.0	1613.6	1464.4	418.0	269.0	13.5
S 07	335.0	161.0	498.0	323.0	660.0	486.0	822.0	648.0	984.0	810.0	1147.0	973.0	1309.0	1135.0	1569.0	1395.0	488.0	314.0	13.7
S 08			453.0	254.0	615.0	416.0	777.0	578.0	940.0	741.0	1102.0	903.0	1264.0	1065.0	1524.0	1325.0	558.0	359.0	13.8
S 09			407.9	184.0	570.0	346.0	732.0	509.0	895.0	671.0	1057.0	833.0	1219.0	995.0	1479.0	1255.0	627.0	404.0	14.0
S 10					525.3	276.6	688.0	439.0	850.0	601.0	1012.0	763.0	1174.0	926.0	1434.0	1185.0	697.0	448.5	14.1
S 11							642.8	369.2	805.0	531.0	967.0	694.0	1130.0	856.0	1389.0	1116.0	767.0	493.0	14.3
S 12									760.2	461.8	922.5	624.1	1085.0	786.0	1344.0	1046.0	837.0	538.0	14.5

Max. Pressure	Rotation	Screw stroke Adjustment	Chamber φ (inch)	Air Volume (in ³)		Moving Time (Sec.) (A)		Operating Temperature (°F) (B)		
				Opening	Closing	Opening	Closing	STD (standard)	HT (high temperature)	LT (low temperature)
116 Psi	90° ±4° at 0° and 90°	For 1° adj. need 1/5 Turn	3,94	43,3	67,7	D 0,5 S 0,7	D 0,6 S 0,9	NBR "O" ring - 4 to + 176	FPM "O" ring + 5 to + 300	Silicone "O" ring - 40 to + 176

Notes:
 (A) The above indicated moving time of the actuator, are obtained in the following test conditions:
 (1) Room Temperature, (2) Actuator Stroke 90°, (3) Solenoid Valve with Orifice Of 4 mm and a flow capacity Qn 400 L/min., (4) Inside pipe diameter 8 mm, (5) Medium clean air, (6) Air supply pressure 5,5 bar (79,75 Psi), (7) Actuator without external resistance load. **Cautions: obviously on the field applications when one or more of the above parameter are different, the moving time will be different.**
 (B) For HT (high temperature) and LT (low temperature) services, a special Lubricant is requested. Please contact Air Torque factory.

Operating Medium:
 The operating medium must be free of dust and oil. The maximum particle size must not exceed 30µm (ISO 8573 Part1, Class5). In order to prevent water condensation and/or solidification – ice, when actuator work below 0°C (32°F) – the operating medium must have a dew point equal to -20°C (- 4°F) or, at least 10°C below the ambient temperature (ISO 8573 Part1, Class3).