

AIR TORQUE

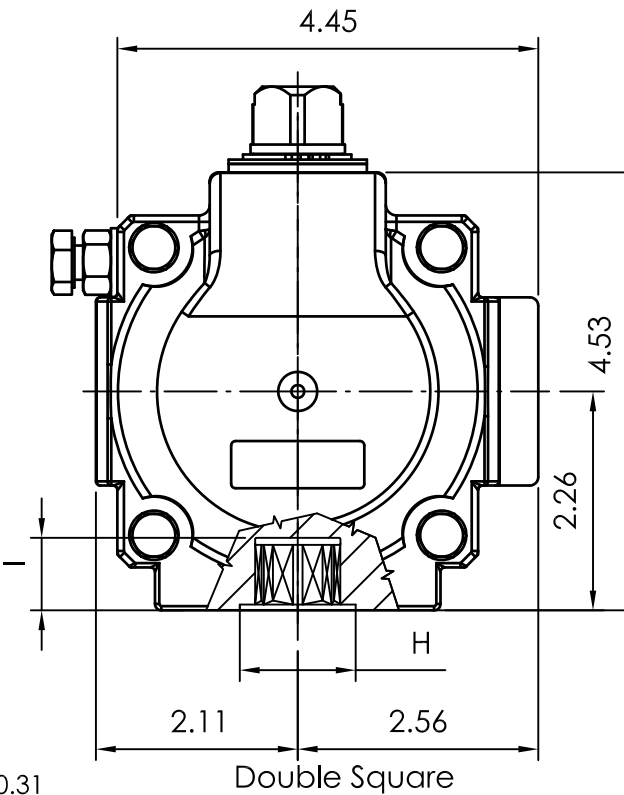
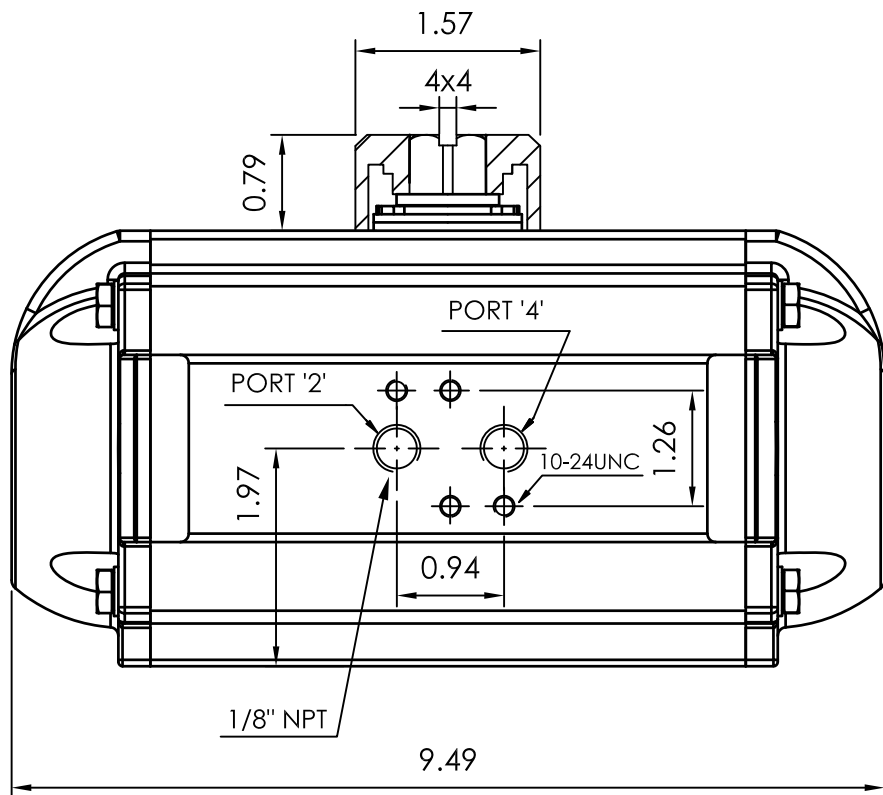
AIR TORQUE S.p.A.
 via Alla Campagna, N°1
 24060 Costa di Mezzate(Bg) Italy
 Tel.: +39 035 682299
 Fax: +39 035 687791
 E-mail: info@airtorque.it

Technical Data Sheet n° **PT250DU**
 Issued on: 12/04

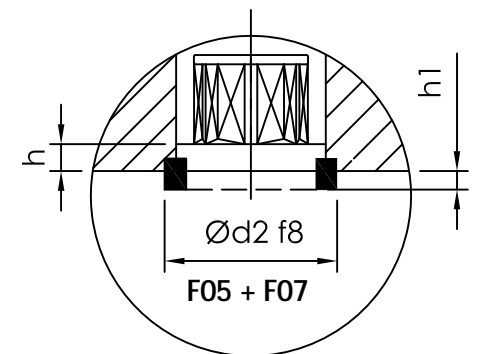
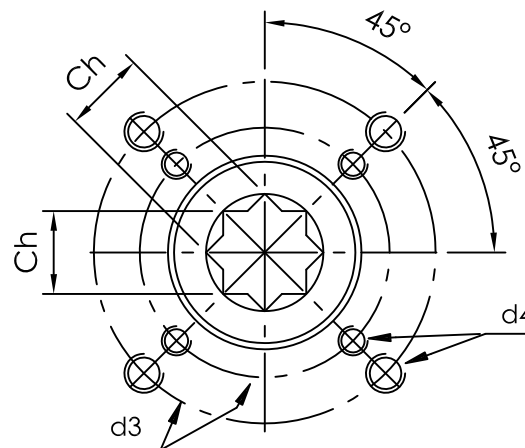
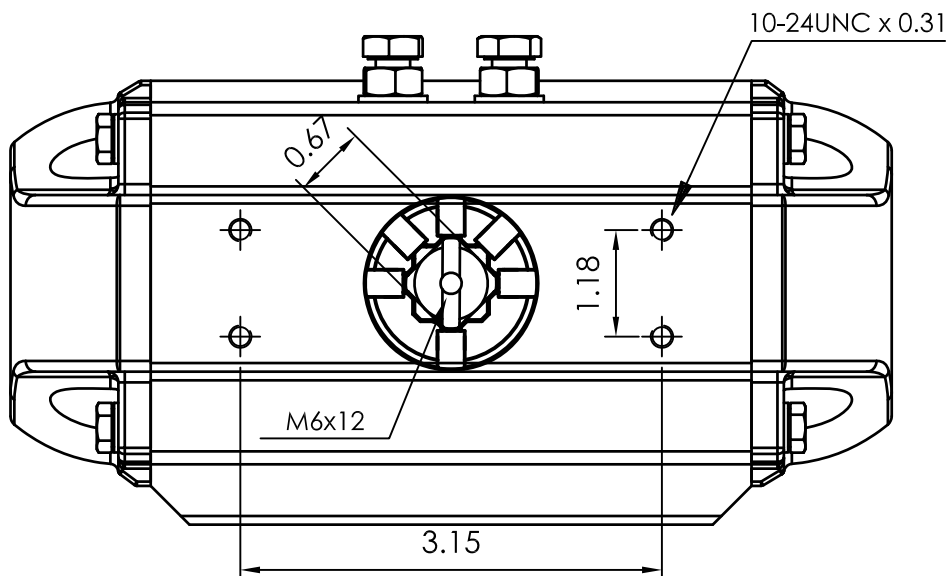
Page: 1/1

**Model PT250
 DA and SR-90°**

Dimensions in inch



Flange Dimensions	
ISO 5211	F05 + F07
d2 f8	1,57(Only F05)
d3	1,97 + 2,76
d4	1/4-20UNC x 0,35 5/16-18UNC x 0,47
H	1,57
Ch	0,67
I min.	0,75
h min.	0,06
h1	0,08
Pressure connection	N 1
Ancillary Attachment	AA 1



Spigot available only on request

TYPE	OUTPUT TORQUE FOR DOUBLE ACTING IN INCH-LBS								WEIGHT (LBS)								
	40 Psi		50 Psi		60 Psi		70 Psi			80 Psi		90 Psi		100 Psi		116 Psi	
Pressure	0°	90°	0°	90°	0°	90°	0°	90°	0°	90°	0°	90°	0°	90°	0°	90°	9.20
D	447.0		559.0		670.0		782.0		894.0		1005.0		1117.0		1296.0		

TYPE	OUTPUT TORQUE FOR SPRING RETURN IN INCH-LBS																Spring stroke		WEIGHT (LBS)
	40 Psi		50 Psi		60 Psi		70 Psi		80 Psi		90 Psi		100 Psi		116 Psi		90°	0°	
Pressure	0°	90°	0°	90°	0°	90°	0°	90°	0°	90°	0°	90°	0°	90°	0°	90°	Start	End	
S 05	285.0	191.0	396.0	303.0	508.0	415.0	620.0	526.0	731.0	638.0	843.0	750.0	955.0	862.0	1133.7	1040.4	256.0	162.0	9.78
S 06	252.0	140.0	476.0	252.0	476.0	364.0	587.0	475.0	699.0	587.0	811.0	699.0	922.0	810.0	1101.3	989.3	307.0	195.0	9.90
S 07	220.0	89.0	331.0	201.0	443.0	313.0	555.0	424.0	667.0	536.0	778.0	648.0	890.0	759.0	1069.0	938.0	358.0	227.0	10.0
S 08			299.0	150.0	411.0	261.0	522.0	373.0	634.0	485.0	746.0	597.0	858.0	708.0	1036.0	887.0	409.0	260.0	10.1
S 09			266.5	98.6	378.0	210.0	490.0	322.0	602.0	434.0	713.0	545.0	825.0	657.0	1004.0	836.0	460.0	292.0	10.2
S 10					345.8	159.2	457.0	271.0	569.0	383.0	681.0	494.0	793.0	606.0	971.0	785.0	511.0	325.0	10.4
S 11							425.0	219.8	537.0	331.0	648.0	443.0	760.0	555.0	939.0	734.0	562.0	357.0	10.5
S 12									504.3	280.4	616.0	392.1	728.0	504.0	906.0	683.0	613.0	389.0	10.6

Max. Pressure	Rotation	Screw stroke Adjustment	Chamber φ (inch)	Air Volume (in ³)		Moving Time (Sec.) (A)		Operating Temperature (°F) (B)		
				Opening	Closing	Opening	Closing	STD (standard)	HT (high temperature)	LT (low temperature)
116 Psi	90° ±4° at 0° and 90°	For 1° adj. need 1/5 Turn	3,46	31,1	47,6	D 0,4 S 0,5	D 0,5 S 0,6	NBR "O" ring - 4 to + 176	FPM "O" ring + 5 to + 300	Silicone "O" ring - 40 to + 176

Notes:
 (A) The above indicated moving time of the actuator, are obtained in the following test conditions:
 (1) Room Temperature, (2) Actuator Stroke 90°, (3) Solenoid Valve with Orifice Of 4 mm and a flow capacity Qn 400 L/min., (4) Inside pipe diameter 8 mm, (5) Medium clean air, (6) Air supply pressure 5,5 bar (79,75 Psi), (7) Actuator without external resistance load. **Cautions: obviously on the field applications when one or more of the above parameter are different, the moving time will be different.**
 (B) For HT (high temperature) and LT (low temperature) services, a special Lubricant is requested. Please contact Air Torque factory.

Operating Medium:
 The operating medium must be free of dust and oil. The maximum particle size must not exceed 30µm (ISO 8573 Part1, Class5). In order to prevent water condensation and/or solidification – ice, when actuator work below 0°C (32°F) – the operating medium must have a dew point equal to -20°C (-4°F) or, at least 10°C below the ambient temperature (ISO 8573 Part1, Class3).