

AIR TORQUE

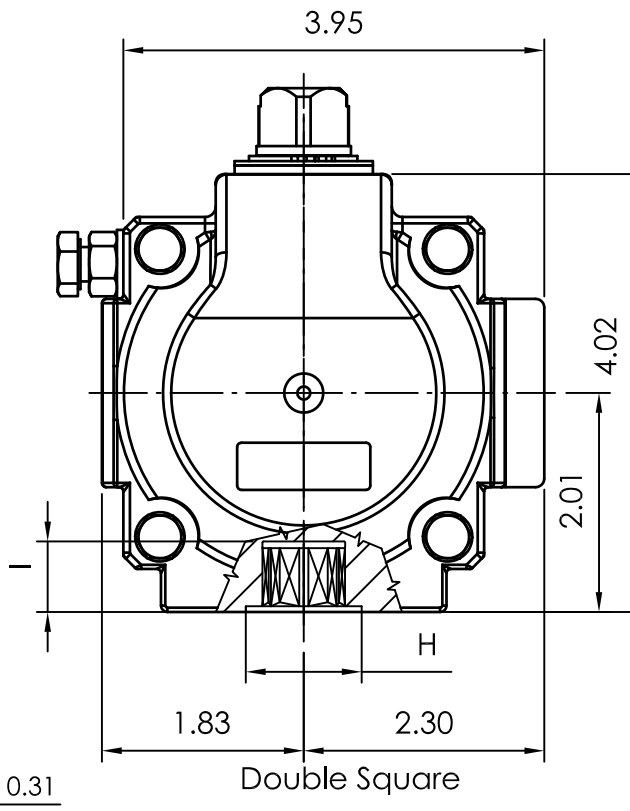
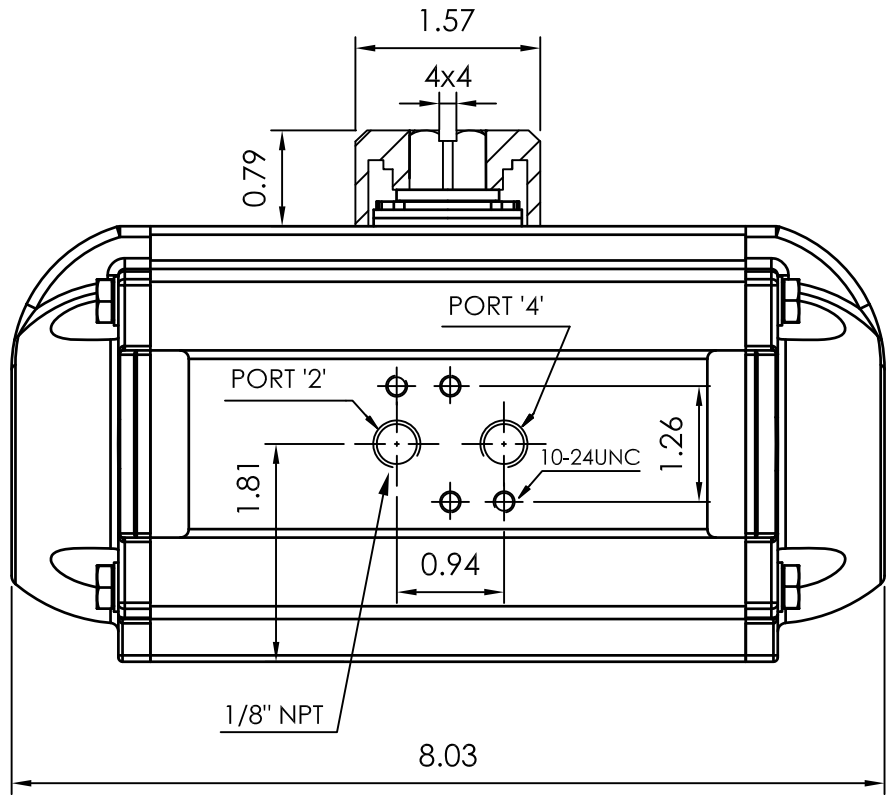
AIR TORQUE S.p.A.
 via Alla Campagna, N°1
 24060 Costa di Mezzate (Bg) Italy
 Tel.: +39 035 682299
 Fax: +39 035 687791
 E-mail: info@airtorque.it

Technical Data Sheet n° **PT200DU**
 Issued on: 12/04

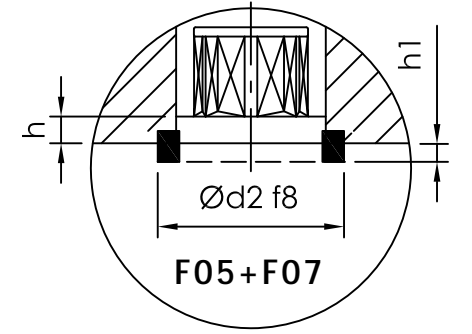
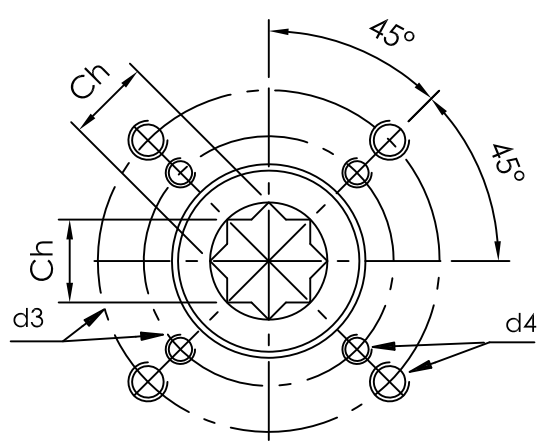
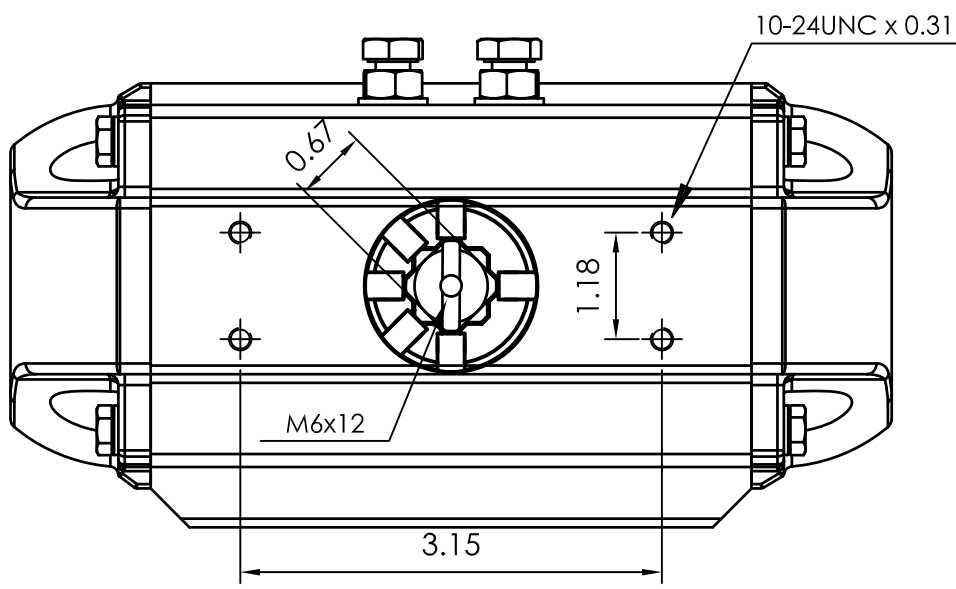
Page: 1/1

Model PT200
DA and SR - 90°

Dimensions in inch



Flange Dimensions	
ISO 5211	F05 + F07
d2 f8	1,38 (Only F05)
d3	1,97 + 2,76
d4	1/4-20UNC x 0,35 5/16-18UNC x 0,47
H	1,38
Ch	0,55
I min.	0,63
h min.	0,06
h1	0,08
Pressure connection	N 1
Ancillary Attachment	AA 1



Spigot available only on request

TYPE	OUTPUT TORQUE FOR DOUBLE ACTING IN INCH-LBS																WEIGHT (LBS)	
	40 Psi		50 Psi		60 Psi		70 Psi		80 Psi		90 Psi		100 Psi		116 Psi			
Pressure	0°	90°	0°	90°	0°	90°	0°	90°	0°	90°	0°	90°	0°	90°	0°	90°	6,53	
D	284.0		355.0		426.0		497.0		568.0		639.0		710.0		824.0			

TYPE	OUTPUT TORQUE FOR SPRING RETURN IN INCH-LBS																Spring stroke		WEIGHT (LBS)
	40 Psi		50 Psi		60 Psi		70 Psi		80 Psi		90 Psi		100 Psi		116 Psi		90°	0°	
Pressure	0°	90°	0°	90°	0°	90°	0°	90°	0°	90°	0°	90°	0°	90°	0°	90°	Start	End	
S 05	186.0	131.0	257.0	202.0	328.0	273.0	399.0	344.0	470.0	415.0	541.0	486.0	612.0	557.0	725.9	670.5	153.0	97.8	6.90
S 06	167.0	100.0	238.0	171.0	309.0	242.0	380.0	313.0	451.0	384.0	522.0	455.0	593.0	526.0	706.3	639.9	184.0	117.0	6.98
S 07	147.0	70.0	218.0	141.0	289.0	212.0	360.0	283.0	431.0	354.0	502.0	425.0	573.0	496.0	687.0	609.0	214.0	137.0	7.05
S 08			198.0	110.0	269.0	181.0	340.0	252.0	412.0	323.0	483.0	394.0	554.0	465.0	667.0	579.0	245.0	157.0	7.13
S 09			178.9	79.3	250.0	150.0	321.0	221.0	392.0	292.0	463.0	363.0	534.0	434.0	648.0	548.0	276.0	176.0	7.20
S 10					230.4	119.7	301.0	191.0	372.0	262.0	443.0	333.0	514.0	404.0	628.0	517.0	306.0	196.0	7.28
S 11							281.8	160.1	353.0	231.0	424.0	302.0	495.0	373.0	608.0	487.0	337.0	215.0	7.35
S 12									333.3	200.4	404.3	271.4	475.0	342.0	589.0	456.0	368.0	235.0	7.43

Max. Pressure	Rotation	Screw stroke Adjustment	Chamber φ (inch)	Air Volume (in ³)		Moving Time (Sec.) (A)		Operating Temperature (°F) (B)		
				Opening	Closing	Opening	Closing	STD (standard)	HT (high temperature)	LT (low temperature)
116 Psi	90° ±4° at 0° and 90°	For 1° adj. need 1/6 Turn	2,95	18,9	29,9	D 0,30 S 0,40	D 0,35 S 0,50	NBR "O" ring - 4 to + 176	FPM "O" ring + 5 to + 300	Silicone "O" ring - 40 to + 176

Notes:
 (A) The above indicated moving time of the actuator, are obtained in the following test conditions:
 (1) Room Temperature, (2) Actuator Stroke 90°, (3) Solenoid Valve with Orifice Of 4 mm and a flow capacity Qn 400 L/min., (4) Inside pipe diameter 8 mm, (5) Medium clean air, (6) Air supply pressure 5,5 bar (79,75 Psi), (7) Actuator without external resistance load. **Cautions: obviously on the field applications when one or more of the above parameter are different, the moving time will be different.**
 (B) For HT (high temperature) and LT (low temperature) services, a special Lubricant is requested. Please contact Air Torque factory.

Operating Medium:
 The operating medium must be free of dust and oil. The maximum particle size must not exceed 30µm (ISO 8573 Part1, Class5). In order to prevent water condensation and/or solidification – ice, when actuator work below 0°C (32°F) – the operating medium must have a dew point equal to -20°C (-4°F) or, at least 10°C below the ambient temperature (ISO 8573 Part1, Class3).