

# AIR TORQUE

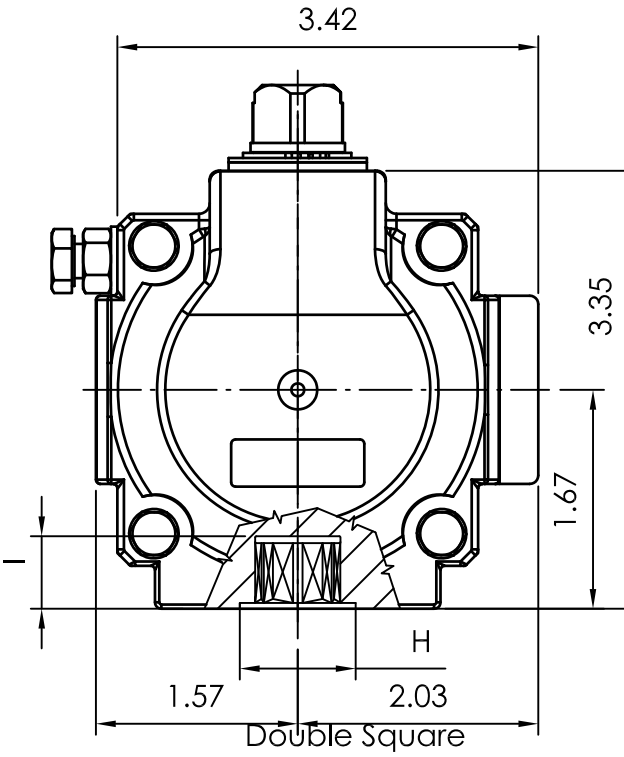
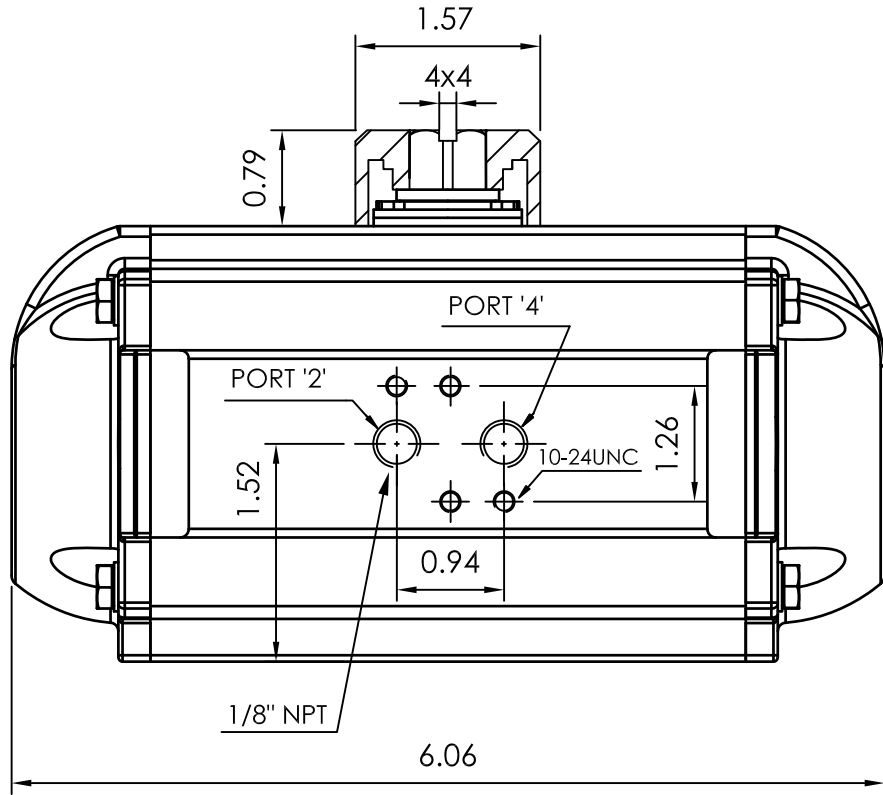
**AIR TORQUE S.p.A.**  
 via Alla Campagna, N° 1  
 24060 Costa di Mezzate(Bg) Italy  
 Tel.: +39 035 682299  
 Fax: +39 035 687791  
 E-mail: info@airtorque.it

Technical Data Sheet n° **PT100DU**  
 Issued on: 12/04

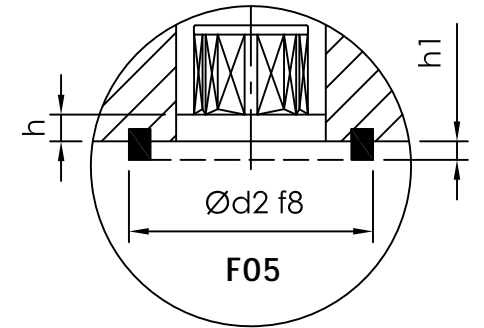
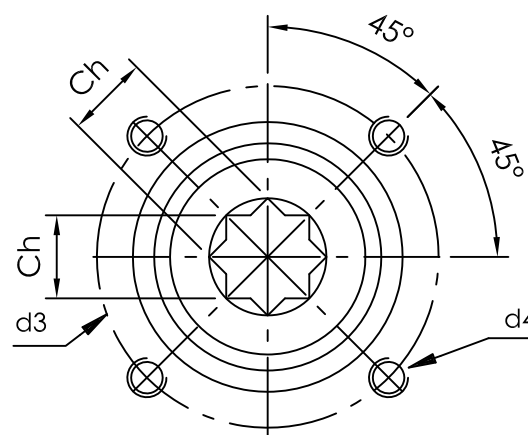
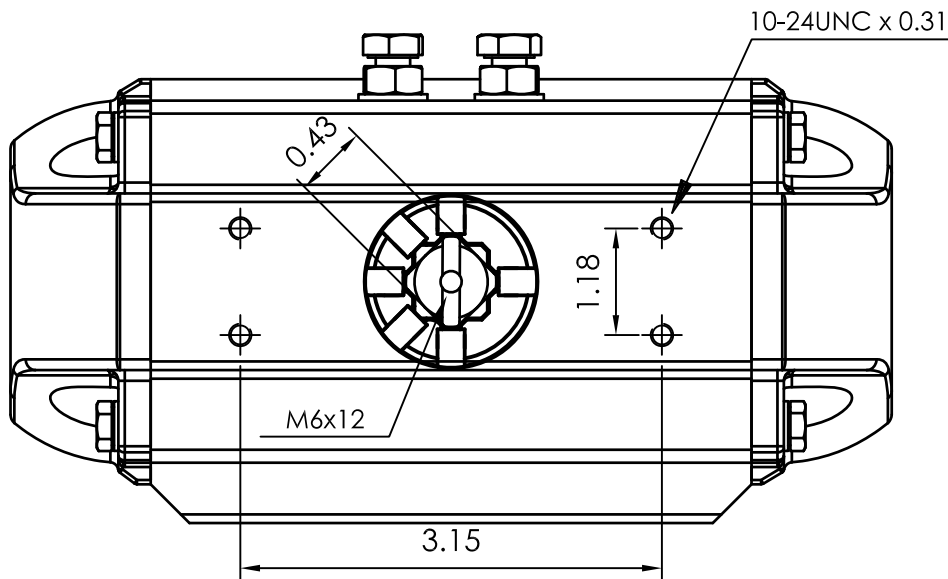
Page: 1/1

**Model PT100**  
**DA and SR - 90°**

Dimensions in inch



Flange Dimensions	
ISO 5211	F05
d2 f8	1,38
d3	1,97
d4	1/4-20UNC x 0,35
H	1,38
Ch	0,55
I min.	0,63
h min.	0,02
h1	0,08
Pressure connection	N 1
Ancillary Attachment	AA 1



Spigot available only on request

TYPE	OUTPUT TORQUE FOR DOUBLE ACTING IN INCH-LBS								WEIGHT (LBS)									
	40 Psi		50 Psi		60 Psi		70 Psi				80 Psi		90 Psi		100 Psi		116 Psi	
Pressure	0°	90°	0°	90°	0°	90°	0°	90°	0°	90°	0°	90°	0°	90°	0°	90°	3.80	
D	143.0		179.0		215.0		251.0		286.0		322.0		358.0		415.0			

TYPE	OUTPUT TORQUE FOR SPRING RETURN IN INCH-LBS																Spring stroke		WEIGHT (LBS)
	40 Psi		50 Psi		60 Psi		70 Psi		80 Psi		90 Psi		100 Psi		116 Psi				
Pressure	0°	90°	0°	90°	0°	90°	0°	90°	0°	90°	0°	90°	0°	90°	0°	90°	Start	End	
S 05	94.0	68.5	130.0	104.0	166.0	140.0	201.0	176.0	237.0	212.0	273.0	247.0	309.0	283.0	366.0	340.5	74.7	49.1	3.98
S 06	84.2	53.5	120.0	89.3	156.0	125.0	192.0	161.0	227.0	197.0	263.0	232.0	299.0	268.0	356.2	325.5	89.6	58.9	4.02
S 07	74.4	38.6	110.0	74.4	146.0	110.0	182.0	146.0	218.0	182.0	253.0	218.0	289.0	253.0	346.0	311.0	105.0	68.8	4.06
S 08			100.0	59.5	136.0	95.2	172.0	131.0	208.0	167.0	243.0	203.0	279.0	238.0	337.0	296.0	119.0	78.6	4.09
S 09			90.5	44.5	126.0	80.3	162.0	116.0	198.0	152.0	234.0	188.0	269.0	223.0	327.0	281.0	134.0	88.4	4.13
S 10					116.5	65.4	152.0	101.0	188.0	137.0	224.0	173.0	260.0	209.0	317.0	266.0	149.0	98.2	4.17
S 11							142.5	86.2	178.0	122.0	214.0	158.0	250.0	194.0	307.0	251.0	164.0	108.0	4.20
S 12									168.4	107.1	204.2	142.9	240.0	179.0	297.0	236.0	179.0	118.0	4.24

Max. Pressure	Rotation	Screw stroke Adjustment	Chamber $\phi$ (inch)	Air Volume (in <sup>3</sup> )		Moving Time (Sec.) (A)		Operating Temperature (°F) (B)		
				Opening	Closing	Opening	Closing	STD (standard)	HT (high temperature)	LT (low temperature)
116 Psi	90° ±4° at 0° and 90°	For 1° adj. need 1/6 Turn	2,48	9,8	15,9	D 0,25 S 0,30	D 0,30 S 0,35	NBR "O" ring - 4 to + 176	FPM "O" ring + 5 to + 300	Silicone "O" ring - 40 to + 176

**Notes:**  
 (A) The above indicated moving time of the actuator, are obtained in the following test conditions:  
 (1) Room Temperature, (2) Actuator Stroke 90°, (3) Solenoid Valve with Orifice Of 4 mm and a flow capacity Qn 400 L/min., (4) Inside pipe diameter 8 mm, (5) Medium clean air, (6) Air supply pressure 5,5 bar (79,75 Psi), (7) Actuator without external resistance load. **Cautions: obviously on the field applications when one or more of the above parameter are different, the moving time will be different.**  
 (B) For HT (high temperature) and LT (low temperature) services, a special Lubricant is requested. Please contact Air Torque factory.

**Operating Medium:**  
 The operating medium must be free of dust and oil. The maximum particle size must not exceed 30µm (ISO 8573 Part1, Class5). In order to prevent water condensation and/or solidification – ice, when actuator work below 0°C (32°F) – the operating medium must have a dew point equal to -20°C (-4°F) or, at least 10°C below the ambient temperature (ISO 8573 Part1, Class3).