

AIR TORQUE

AIR TORQUE S.p.A.

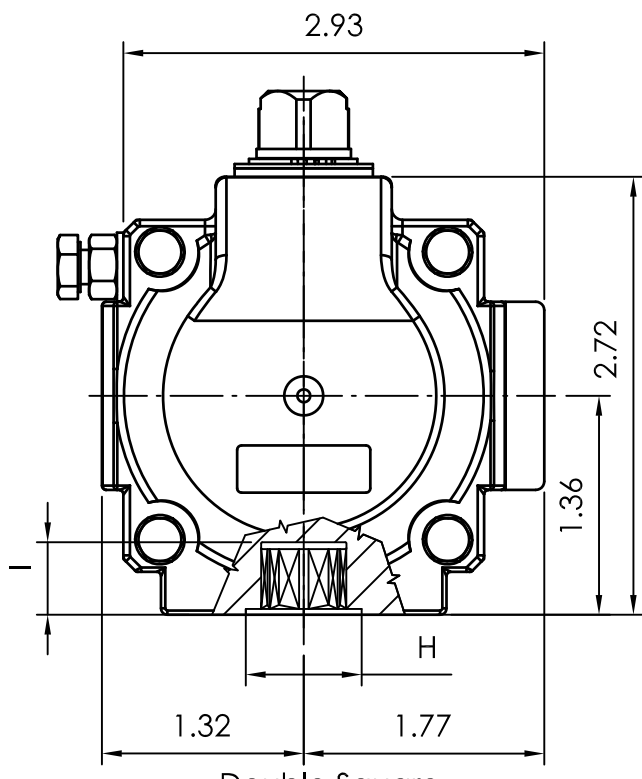
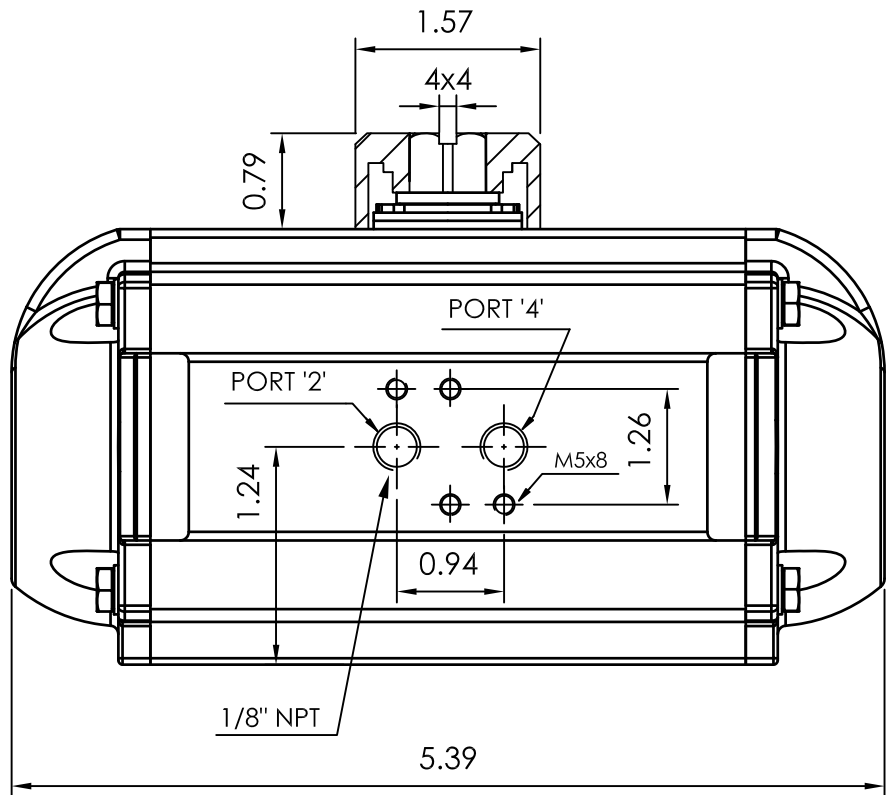
via Alla Campagna, N°1
24060 Costa di Mezzate(Bg) Italy
Tel.: +39 035 682299
Fax: +39 035 687791
E-mail: info@airtorque.it

Technical Data Sheet n°PT050DU
Issued on: 12/05

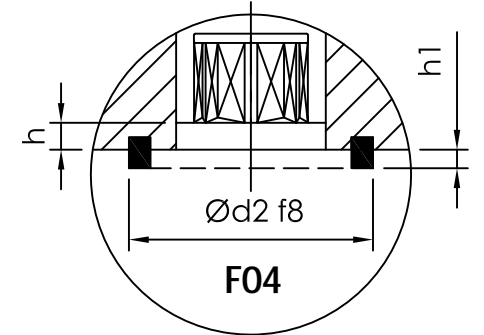
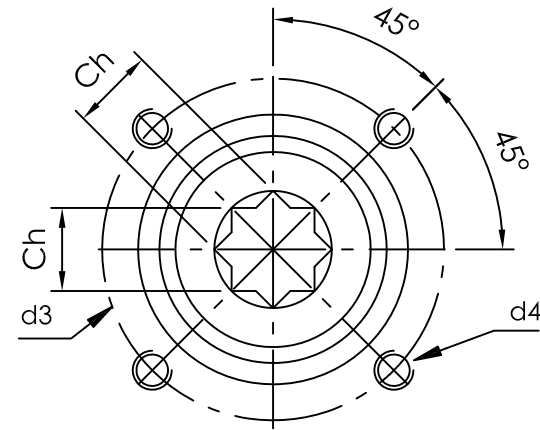
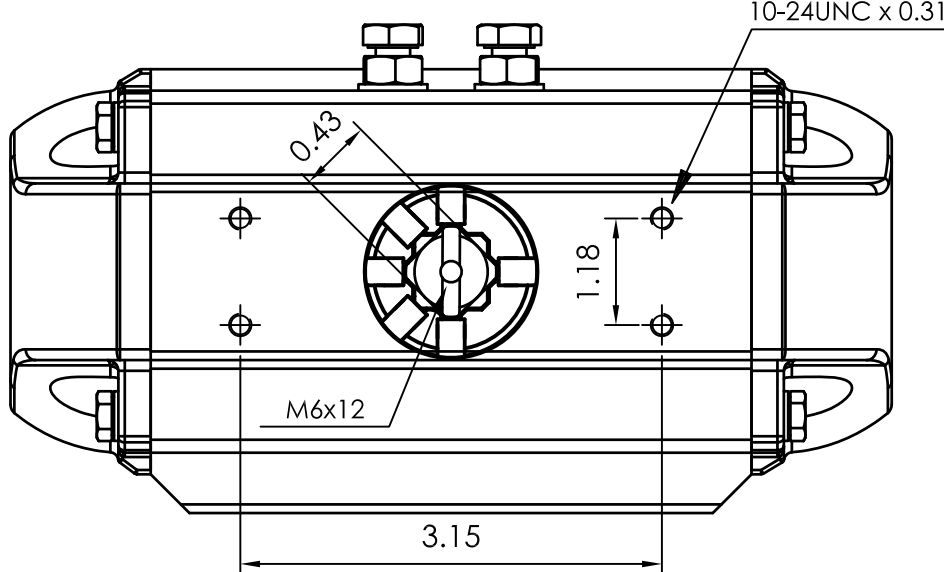
Page: 1/1

Model PT050
DA and SR - 90°

Dimensions in inch



Flange Dimensions	
ISO 5211	F04
d2 f8	1,18
d3	1,65
d4	10-24UNC x 0,31
H	1,18
Ch	0,43
l min.	0,47
h min.	0,02
h1	0,06
Pressure connection	N 1
Ancillary Attachment	AA 1



Spigot available only on request

TYPE	OUTPUT TORQUE FOR DOUBLE ACTING AND SPRING RETURN IN INCH-LBS								WEIGHT (LBS)									
	40 Psi		50 Psi		60 Psi		70 Psi				80 Psi		90 Psi		100 Psi		116 Psi	
Pressure	0°	90°	0°	90°	0°	90°	0°	90°	0°	90°	0°	90°	0°	90°	0°	90°	2.54	
D	81.1		101.0		122.0		142.0		162.0		183.0		203.0		235.0			

TYPE	OUTPUT TORQUE FOR SPRING RETURN IN INCH-LBS																Spring Stroke		WEIGHT (LBS)
	40 Psi		50 Psi		60 Psi		70 Psi		80 Psi		90 Psi		100 Psi		116 Psi				
	0°	90°	0°	90°	0°	90°	0°	90°	0°	90°	0°	90°	0°	90°	0°	90°	90°	0°	
S 05	51.3	38.0	71.6	58.3	91.9	78.6	112.0	98.9	132.0	119.0	153.0	139.0	173.0	160.0	205.2	192.0	43.1	29.8	2.62
S 06	45.4	29.4	65.6	49.7	85.9	70.0	106.0	90.3	127.0	111.0	147.0	131.0	167.0	151.0	199.5	183.6	51.8	35.8	2.65
S 07	39.4	20.8	59.7	41.1	80.0	61.3	100.0	81.6	121.0	102.0	141.0	122.0	161.0	142.0	194.0	175.0	60.4	41.8	2.67
S 08			53.7	32.4	74.0	52.7	94.3	73.0	115.0	93.0	135.0	114.0	155.0	134.0	188.0	166.0	69.0	47.7	2.69
S 09			47.7	23.8	68.0	44.1	88.3	64.4	109.0	85.0	129.0	105.0	149.0	125.0	182.0	158.0	77.6	53.7	2.71
S 10					62.1	35.5	82.4	55.8	103.0	76.0	123.0	96.3	143.0	117.0	176.0	149.0	86.3	59.7	2.74
S 11							76.4	47.1	96.7	67.4	117.0	87.7	137.0	108.0	170.0	140.0	94.9	65.6	2.76
S 12									90.7	58.8	111.0	79.1	131.0	99.0	164.0	132.0	104.0	71.6	2.78

Max. Pressure	Rotation	Screw stroke Adjustment	Chamber ϕ (inch)	Air Volume (in ³)		Moving Time (Sec.) (A)		Operating Temperature (°F) (B)		
				Opening	Closing	Opening	Closing	STD (standard)	HT (high temperature)	LT (low temperature)
116 Psi	90° ±4° at 0° and 90°	For 1° adj. need 1/6 Turn	1.97	5.5	9.2	D 0.20 S 0.25	D 0.25 S 0.30	NBR "O" ring - 4 to + 176	FPM "O" ring + 5 to + 300	Silicone "O" ring - 40 to + 176

Notes:

- (A) The above indicated moving time of the actuator, are obtained in the following test conditions:
(1) Room Temperature, (2) Actuator Stroke 90°, (3) Solenoid Valve with Orifice Of 4 mm and a flow capacity Qn 400 L/min., (4) Inside pipe diameter 8 mm, (5) Medium clean air, (6) Air supply pressure 5,5 bar (79,75 Psi), (7) Actuator without external resistance load. **Cautions: obviously on the field applications when one or more of the above parameter are different, the moving time will be different.**
- (B) For HT (high temperature) and LT (low temperature) services, a special Lubricant is requested. Please contact Air Torque factory.

Operating Medium:

The operating medium must be free of dust and oil. The maximum particle size must not exceed 30µm (ISO 8573 Part1, Class5). In order to prevent water condensation and/or solidification – ice, when actuator work below 0°C (32°F) – the operating medium must have a dew point equal to -20°C (- 4°F) or, at least 10°C below the ambient temperature (ISO 8573 Part1, Class3).