

HOW TO ORDER PT Pneumatic Actuators

All dimensions, materials are referred to updated catalogue and/or technical data sheet.

| Model | Action | Spring Q.ty | Type of Protection | Flange type | Spigot | Square (2) | Seals |
|--------|--------|-----------------|--------------------|-------------|--------|------------|-------|
| PT045 | | | | F04 | | 11 | 9 |
| PT050 | | | | F04 | | 11 | 9 |
| PT100 | D | Only for Spring | | F05 | | 14 | 11 |
| PT200 | | Spring Return | | F05 | | 14 | 17 |
| PT250 | | | | F07 | | 17 | 17 |
| PT300 | Do | | | F05-F07 | | 17 | 22 |
| PT350 | | | | F10 | | 22 | 17 |
| PT400 | | | | F10 | F | 22 | 27 |
| PT450 | | | | F12 | | 27 | 27 |
| PT500 | S | | H | F12 | | 27 | 27 |
| PT550 | | | | F14 | | 36 | 27 |
| PT600 | | | | F14 | | 36 | 36 |
| PT650 | So | | | F16 | | 46 | 36 |
| PT700 | | | | F16 | | 46 | 46 |
| PT750 | | | | F16 | | 46 | 55 |
| PT800 | | | | F25 | | 55 | 55 |
| PT1000 | | | | F30 | | 75 | 55 |

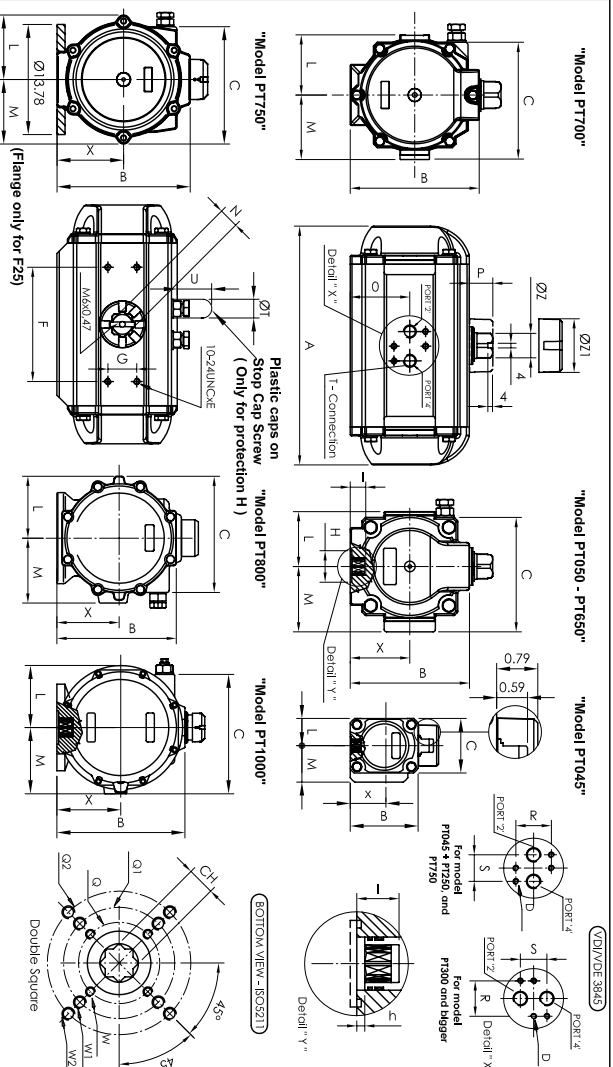
NBR Standard Seals (-20°C to +80°C)
 HT = FPM Seals (-15°C to +150°C)
 LT = Silicone Seals (-40°C to +80°C)

- Notes:
- Standard Relation for double acting and spring return is Clockwise to close (for double acting when port 4 is pressurised).
 - Standard Start connection is a female square. Other type of start connection like different square sizes, Flat head and Keyed bore are available and have a detailed description.
 - Keyed bore are available and have a detailed description.
 - The standard assembly / rotation type is "S.T.", other assembly / rotation type to be specified as per table TYAS.

How to order:

| | | | | | | | | | |
|-------|----|---|----|---|---------|---|----|---|---|
| 1 | 1a | 2 | 3 | 4 | 5 | 6 | 7 | 8 | 9 |
| PT250 | U | S | 12 | F | F05-F07 | Y | 17 | - | - |

- 1** Actuator Model Range: 90° Rotation (Standard) = PT045 to PT1000
120° Rotation (Only Double Acting) = PT052 to PT602
135° Rotation (Only Double Acting) = PT053 to PT603
180° Rotation (Double Acting and Spring Return) = PT058 to PT608
 - 2** U = Actuator with UNC threaded holes of the body and NPT air connection
N = Actuator with METRIC threaded holes of the body and NPT air connection
 - 3** D = Double Acting, Clockwise to close CW
Do = Double Acting, Counterclockwise to close CCW
S = Spring Return, Springs Clockwise to close CW
So = Spring Return, Springs Counterclockwise to close CCW
 - 4** No code = Double acting actuators
12 = Spring Counterclockwise
05 = 12 for standard actuators
10 to 24 only for spring return 180° rotation
 - 5** Protection Type (F, H)
 - 6** ISO Flange (See table)
 - 7** Diagonal square = only dimension
Parallel square = Square dimensions - L
Double square = Square dimensions - DS
Flat head drive = H + Dimensions "S"
Single Key drive = W + Dimensions "D"
Double Key drive = W + Dimensions "D"
 - 8** No code = Actuator with standard position indicator
for other position indicator see related tables
 - 9** No code = NBR standard seals (-20°C to +80°C)
HT = FPM Seals for high temperature (-15°C to +150°C)
LT = Silicone Seals for low temperature (-40°C to +80°C)
- Coding example:
- PT100-U-D-F-F05-N-14-DS
 Pneumatic actuator PT100 with UNC threads Double Acting Protection F F05/14 double square without spigot and with standard NBR o-rings
- PT400-U-S-12-F-F07-F10-Y-22DS
 Pneumatic actuator PT400 with UNC threads Spring Return (n. 12 springs) Protection F F07-F10/22 double square with spigot and with standard NBR o-rings
- Note:
- FOR PROTECTION TYPE H:**
 - EXTRUDED BODY (for models PT045 to PT750) : PTFE Coated Color Light Grey
 - CASTED BODY (for models PT800, PT1000) : Epoxy Coated Color RAL 7046
 - END CAP : Epoxy Coated Color RAL 2011
- FOR PROTECTION TYPE F:**
 - BODY : Epoxy Coated Color RAL 7046
 - END CAP : Epoxy Coated Color RAL 2011



Dimensions in INCH

| | PT045 | PT050 | PT100 | PT200 | PT250 | PT300 | PT350 | PT400 | PT450 | PT500 | PT550 | PT600 | PT650 | PT700 | PT750 | PT800 | PT1000 |
|---|-------|-------|-------|-------|-------|-------|-------|-------|-------|-------|-------|-------|-------|-------|-------|-------|--------|
| A | 4.65 | 5.39 | 6.06 | 8.03 | 9.49 | 10.20 | 11.97 | 13.11 | 15.55 | 16.65 | 18.62 | 20.79 | 23.82 | 27.95 | 31.97 | 34.49 | 37.40 |
| B | 2.60 | 2.72 | 3.35 | 4.02 | 4.53 | 5.00 | 5.71 | 6.18 | 6.97 | 7.72 | 8.48 | 9.45 | 11.75 | 15.08 | 16.14 | 20.39 | |
| C | 2.60 | 2.72 | 3.43 | 3.96 | 4.45 | 4.94 | 5.96 | 6.81 | 7.56 | 8.39 | 9.29 | 10.73 | 13.31 | 15.08 | 19.21 | | |
| D | 0.50 | 0.50 | 0.50 | 0.50 | 0.50 | 0.50 | 0.50 | 0.50 | 0.50 | 0.50 | 0.50 | 0.50 | 0.50 | 0.50 | 0.50 | 0.50 | 0.50 |
| E | 0.50 | 0.50 | 0.50 | 0.50 | 0.50 | 0.50 | 0.50 | 0.50 | 0.50 | 0.50 | 0.50 | 0.50 | 0.50 | 0.50 | 0.50 | 0.50 | 0.50 |
| F | 1.92 | 2.14 | 2.31 | 2.51 | 2.74 | 3.01 | 3.31 | 3.61 | 3.91 | 4.21 | 4.51 | 4.81 | 5.11 | 5.41 | 5.71 | 6.01 | 6.31 |
| G | 0.95 | 1.18 | 1.18 | 1.18 | 1.18 | 1.18 | 1.18 | 1.18 | 1.18 | 1.18 | 1.18 | 1.18 | 1.18 | 1.18 | 1.18 | 1.18 | 1.18 |
| H | 1.06 | 1.15 | 1.25 | 1.35 | 1.45 | 1.55 | 1.65 | 1.75 | 1.85 | 1.95 | 2.05 | 2.15 | 2.25 | 2.35 | 2.45 | 2.55 | 2.65 |
| I | 0.40 | 0.40 | 0.40 | 0.40 | 0.40 | 0.40 | 0.40 | 0.40 | 0.40 | 0.40 | 0.40 | 0.40 | 0.40 | 0.40 | 0.40 | 0.40 | 0.40 |
| J | 0.98 | 1.26 | 1.51 | 1.81 | 1.97 | 2.09 | 2.28 | 2.44 | 2.63 | 2.81 | 2.98 | 3.15 | 3.32 | 3.49 | 3.65 | 3.82 | 3.98 |
| K | 0.97 | 0.79 | 0.79 | 0.79 | 0.79 | 0.79 | 0.79 | 0.79 | 0.79 | 0.79 | 0.79 | 0.79 | 0.79 | 0.79 | 0.79 | 0.79 | 0.79 |
| L | 1.26 | 1.26 | 1.26 | 1.26 | 1.26 | 1.26 | 1.26 | 1.26 | 1.26 | 1.26 | 1.26 | 1.26 | 1.26 | 1.26 | 1.26 | 1.26 | 1.26 |
| M | 0.94 | 0.94 | 0.94 | 0.94 | 0.94 | 0.94 | 0.94 | 0.94 | 0.94 | 0.94 | 0.94 | 0.94 | 0.94 | 0.94 | 0.94 | 0.94 | 0.94 |
| N | 0.02 | 0.02 | 0.02 | 0.02 | 0.02 | 0.02 | 0.02 | 0.02 | 0.02 | 0.02 | 0.02 | 0.02 | 0.02 | 0.02 | 0.02 | 0.02 | 0.02 |
| O | 1.30 | 1.36 | 1.47 | 1.57 | 1.67 | 1.76 | 1.85 | 1.94 | 2.03 | 2.12 | 2.21 | 2.30 | 2.39 | 2.48 | 2.57 | 2.66 | 2.74 |
| P | 0.53 | 0.53 | 0.53 | 0.53 | 0.53 | 0.53 | 0.53 | 0.53 | 0.53 | 0.53 | 0.53 | 0.53 | 0.53 | 0.53 | 0.53 | 0.53 | 0.53 |
| Q | 1.57 | 1.57 | 1.57 | 1.57 | 1.57 | 1.57 | 1.57 | 1.57 | 1.57 | 1.57 | 1.57 | 1.57 | 1.57 | 1.57 | 1.57 | 1.57 | 1.57 |
| R | 1.57 | 1.57 | 1.57 | 1.57 | 1.57 | 1.57 | 1.57 | 1.57 | 1.57 | 1.57 | 1.57 | 1.57 | 1.57 | 1.57 | 1.57 | 1.57 | 1.57 |
| S | 0.94 | 0.94 | 0.94 | 0.94 | 0.94 | 0.94 | 0.94 | 0.94 | 0.94 | 0.94 | 0.94 | 0.94 | 0.94 | 0.94 | 0.94 | 0.94 | 0.94 |
| T | 0.02 | 0.02 | 0.02 | 0.02 | 0.02 | 0.02 | 0.02 | 0.02 | 0.02 | 0.02 | 0.02 | 0.02 | 0.02 | 0.02 | 0.02 | 0.02 | 0.02 |
| U | 0.02 | 0.02 | 0.02 | 0.02 | 0.02 | 0.02 | 0.02 | 0.02 | 0.02 | 0.02 | 0.02 | 0.02 | 0.02 | 0.02 | 0.02 | 0.02 | 0.02 |
| V | 0.02 | 0.02 | 0.02 | 0.02 | 0.02 | 0.02 | 0.02 | 0.02 | 0.02 | 0.02 | 0.02 | 0.02 | 0.02 | 0.02 | 0.02 | 0.02 | 0.02 |
| W | 0.50 | 0.50 | 0.50 | 0.50 | 0.50 | 0.50 | 0.50 | 0.50 | 0.50 | 0.50 | 0.50 | 0.50 | 0.50 | 0.50 | 0.50 | 0.50 | 0.50 |
| X | 0.50 | 0.50 | 0.50 | 0.50 | 0.50 | 0.50 | 0.50 | 0.50 | 0.50 | 0.50 | 0.50 | 0.50 | 0.50 | 0.50 | 0.50 | 0.50 | 0.50 |
| Y | 0.50 | 0.50 | 0.50 | 0.50 | 0.50 | 0.50 | 0.50 | 0.50 | 0.50 | 0.50 | 0.50 | 0.50 | 0.50 | 0.50 | 0.50 | 0.50 | 0.50 |
| Z | 0.50 | 0.50 | 0.50 | 0.50 | 0.50 | 0.50 | 0.50 | 0.50 | 0.50 | 0.50 | 0.50 | 0.50 | 0.50 | 0.50 | 0.50 | 0.50 | 0.50 |

AIR TORQUE s.p.a.

Costa di Mezzate (Bg) - Italy

HT0 05/05D - NA inch

THIS DRAWING IS PROPERTY OF AIR TORQUE S.P.A. COSTA DI MEZZATE - ITALY AND ALL RIGHTS OF USE AND REPRODUCTION ARE RESERVED.

| Rev. | DATE | DESCRIPTION | BY | CHKD BY | DATE |
|------|------|-------------|----|---------|------|
| 01 | | | | | |

Reason for revision:

| Rev. | DATE | DESCRIPTION | BY | CHKD BY | DATE |
|------|------|-------------|----|---------|------|
| 01 | | | | | |

SPACED RESERVING THE TITLE BLOCK AND CUSTOMER APPROVAL: